

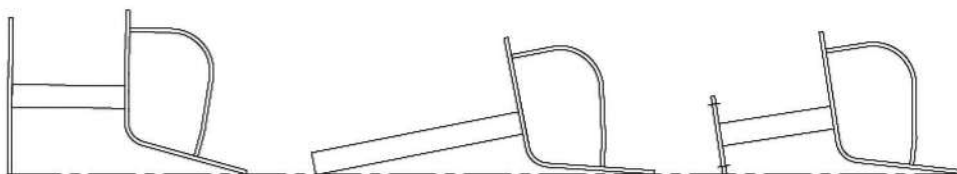
ASSEMBLY AND MOUNTING INSTRUCTIONS – FORESITE DESIGNS
6 FOOT BENCH WITH ARMS, PARKSCAPE DESIGN 150101, 150102, AND 150103

PAGE 1

ASSEMBLY INSTRUCTIONS: BENCH WITH ARMS 6 FOOT LENGTH 150101, 150102, and 150103

1. Unpack and lay out pieces to assemble. Verify that the parts, quantity, and dimensions match those on the enclosed bill of material.
2. Begin by setting up two support frame arm weldments roughly 62 inches apart on centers laying on their back with “seat” in a “vertical” direction. See diagram 1.
3. Make marks on each plate at a distance of $2\frac{7}{8}$, 7, and $11\frac{1}{4}$ inches from the end of the plate. Diagram 2.
4. Locate one bull nose board on the arm weldment at a distance of $3\frac{1}{4}$ inches from end of the board to edge of weldment plate and flat edge on the $11\frac{1}{4}$ inch mark. Make certain curved edge is facing bend in plate.
5. Clamp board to weldment and locate the other arm weldment at distance of $65\frac{1}{4}$ inches from end of board and the board flat edge on the $11\frac{1}{4}$ inch mark. Clamp weldment to board. Use a hand square to align plates perpendicular to board. See diagram 2.
6. Locate the armless weldment at a distance of $34\frac{1}{4}$ inches from plate edge to same end of bull nose used in step 4 and at a distance of $11\frac{1}{4}$ inches from end of the weldment plate to the flat edge of the board. Clamp weldment to board. See diagram 2.
7. Use a hand square to line up weldments on boards.
8. Drill $\frac{5}{32}$ diameter pilot hole (six places) into the board and install six $\frac{1}{4}$ x 2 screws into the board. (use end 2 holes in metal plate of weldments as a drill guide)
9. Set one rectangular board at a distance of $3\frac{1}{4}$ inches from plate side edge to end of board with flat edge on the 7 inch marks. Suggest placing a $\frac{3}{4}$ inch thick spacer between the bull nose and rectangular board at each end to maintain $\frac{3}{4}$ inch gap. Clamp board in place. See diagram 2.
10. Drill $\frac{5}{32}$ diameter pilot hole (six places) into the board and install six $\frac{1}{4}$ x 2 screws into the board. (use second line of 2 holes in metal plate of weldment as a drill guide)
11. Set the second rectangular board at a distance of $3\frac{1}{4}$ inches from plate side edge to end of board with flat edge of board on $2\frac{7}{8}$ inch mark. Suggest placing a $\frac{3}{4}$ inch thick spacer between the two rectangular boards at each end to maintain $\frac{3}{4}$ inch gap. See diagram 2.
12. Drill $\frac{5}{32}$ diameter pilot hole (six places) into the board and install six $\frac{1}{4}$ x 2 screws into the board. (use third line of 2 holes in metal plate of weldment as a drill guide)
13. Locate second bull nose board at a distance of $3\frac{1}{4}$ inches from plate side edge to end of board and at a gap distance of $\frac{3}{4}$ inch between bull nose and rectangular board. Suggest placing a $\frac{3}{4}$ inch thick spacer between the bull nose and rectangular board at each end to maintain $\frac{3}{4}$ inch gap. See diagram 2.
14. Drill $\frac{5}{32}$ diameter pilot hole (six places) into the board and install six $\frac{1}{4}$ x 2 screws into the board. (use fourth line of 2 holes in metal plate of weldment as a drill guide)
15. Check square ness of boards with plates with hand square before tightening screws.
16. Set the bench upright to fasten the boards on the back. Check that weldments are vertical when bench is upright on level surface.

DIAGRAM 1: BENCH WITH ARMS 6 FOOT LENGTH SURFACE 150101, 150102 & 150103 SHOWN
150103 150102 150101



ASSEMBLY AND MOUNTING INSTRUCTIONS – FORESITE DESIGNS
 6 FOOT BENCH WITH ARMS, PARKSCAPE DESIGN 150101, 150102, AND 150103

PAGE 2

17. Make marks on each plate at a distance of $2\frac{7}{8}$, $7\frac{1}{8}$ inches from the end of the plate. Diagram 2
18. Locate one bull nose board on the weldments at a distance of $3\frac{1}{4}$ inches from end of the board to edge of weldment plate with flat edge of board on the $7\frac{1}{8}$ inch marks. Make certain curved edge is facing bend in plate. Clamp board in place. See diagram 3. **IMPORTANT: Make sure that the distance between the two bull nose boards where seat meets the back measures 4 inches or less. Adjust the board on the back to meet 4 inch maximum dimension.**
19. Drill $\frac{5}{32}$ diameter pilot hole (six places) into the board and install six $\frac{1}{4}$ x 2 screws into the board. (use third line of 2 holes in metal plate of weldment as a drill guide)
20. Set one rectangular board at a distance of $3\frac{1}{4}$ inches from plate side edge to end of board with flat edge of board on the $2\frac{7}{8}$ inch mark. Clamp board in place. Suggest placing a $\frac{3}{4}$ inch thick spacer between the bull nose and rectangular board at each end to maintain $\frac{3}{4}$ inch gap. See diagram 3.
21. Drill $\frac{5}{32}$ diameter pilot hole (six places) into the board and install six $\frac{1}{4}$ x 2 screws into the board. (use third line of 2 holes in metal plate of weldments as a drill guide) Diagram 3.
22. Locate second bull nose board at a distance of $3\frac{1}{4}$ inches from plate side edge to end of board with a gap distance of $\frac{3}{4}$ inches between bull nose and rectangular boards at both ends. Suggest placing a $\frac{3}{4}$ inch thick spacer between the bull nose and rectangular board at each end to maintain $\frac{3}{4}$ inch gap. Clamp board in place. See diagram3.
23. Check square ness of boards with plates before tightening all screws.

DIAGRAM 2: BENCH WITH ARMS 6 FOOT 150101 SHOWN (ATTACHING SEAT BOARDS)

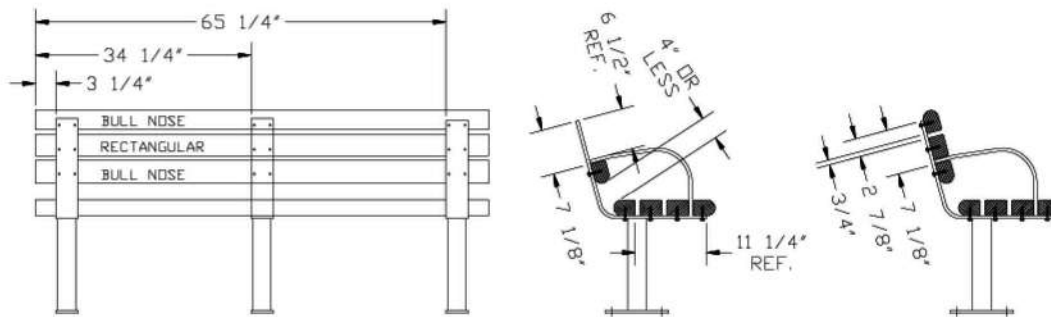
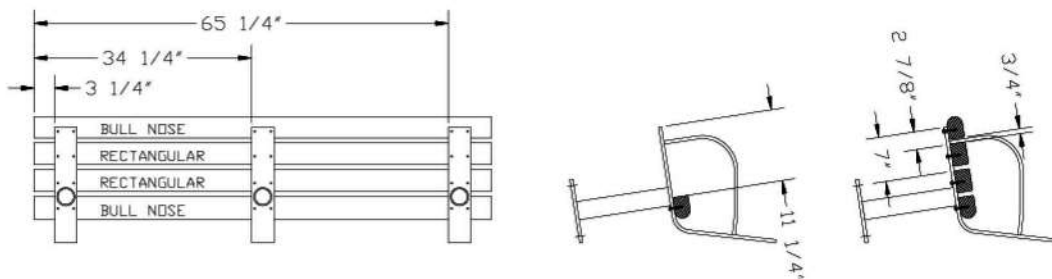


DIAGRAM 3: BENCH WITH ARMS 6 FOOT 150101 SHOWN (ATTACHING BACK BOARDS)



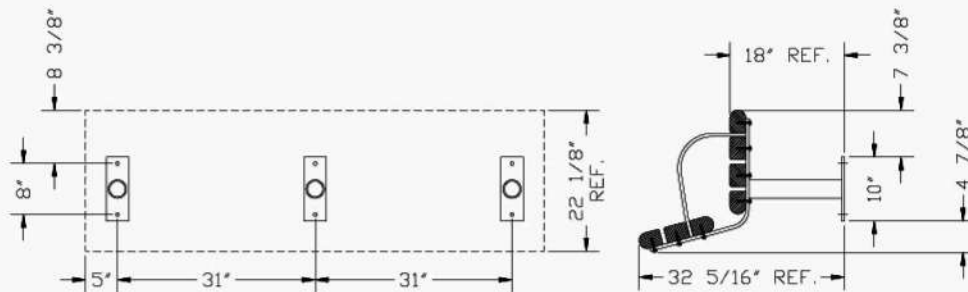
ASSEMBLY AND MOUNTING INSTRUCTIONS – FORESITE DESIGNS
 6 FOOT BENCH WITH ARMS, PARKSCAPE DESIGN 150101, 150102, AND 150103
 PAGE 3

MOUNTING INSTRUCTIONS: BENCH WITH ARMS 6 FOOT LENGTH 150101, 150102, and 150103

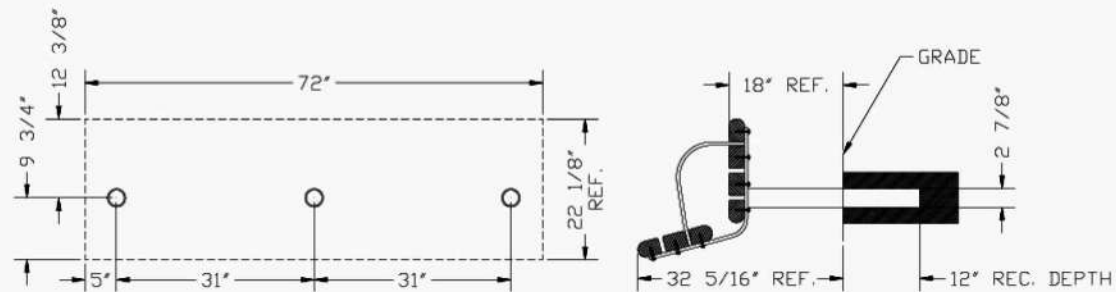
1. Surface mount bench 150101 mounts with ½ inch anchors into concrete surface at dimensions as shown on diagram 3.
2. Embedded mount bench 150102 mounts by setting in filled holes at dimensions as shown on diagram 3.
3. Portable bench 150103 will rest on any flat, even surface-no mounting required

DIAGRAM 4: BENCH WITH ARMS 6 FOOT LENGTH, SHOWN ARE
 SURFACE 150101 CONCRETE ANCHORS 4 PLACES
 IMBEDDED 150102 HOLES 2 PLACES
 PORTABLE 150103 NO MOUNTING

SURFACE 150101



EMBEDDED 150102



PORTABLE 150103

