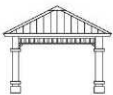
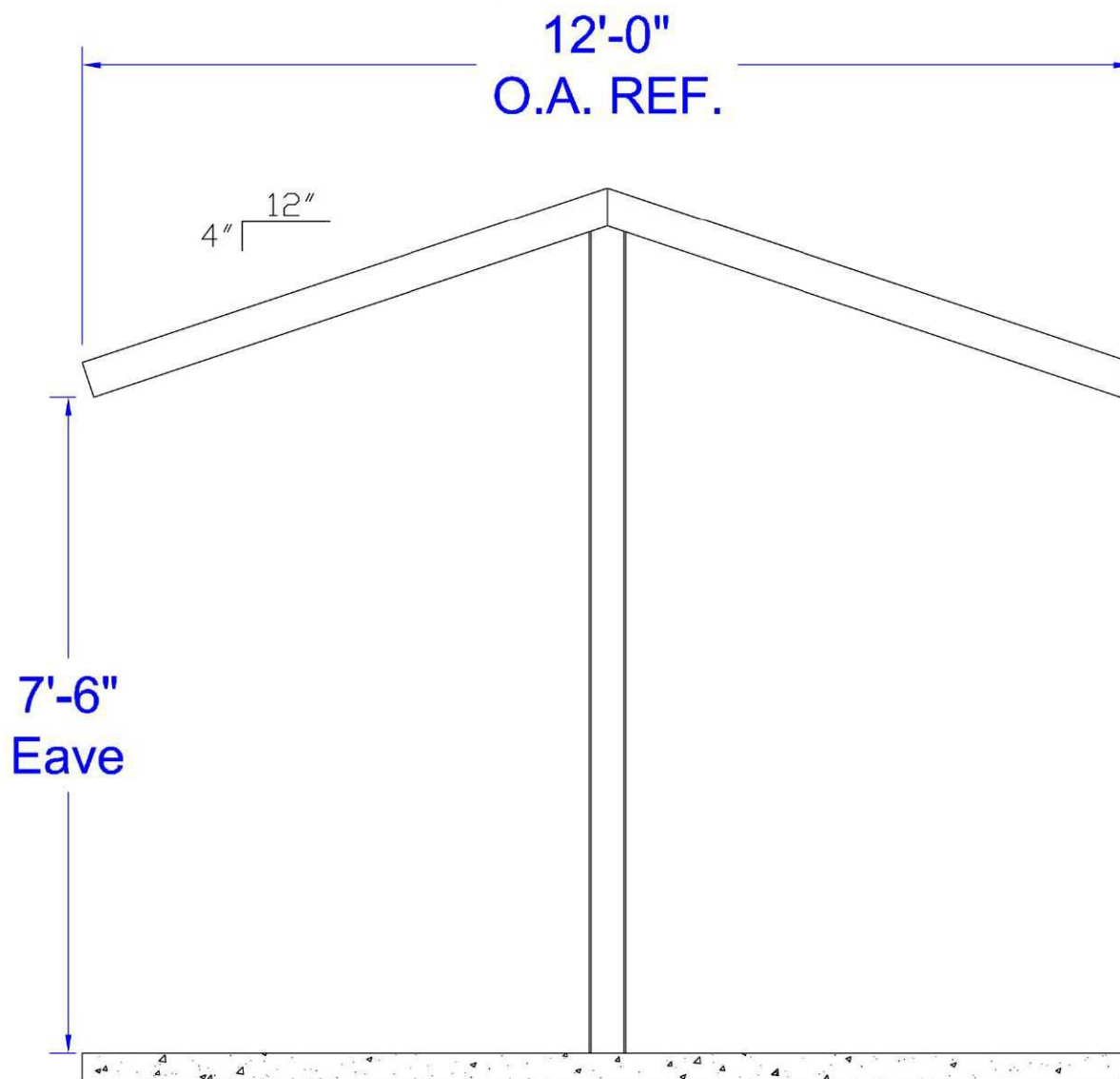


FURNITURE LEISURE INC

1.800.213.2401

www.FurnitureLeisure.com
www.PicnicFurniture.com
www.ParkTables.com

www.PoolFurnitureSupply.com
www.PicnicTableSupplier.com
www.UBrace.com



TITLE: Elevation

All quotation drawings are preliminary only,
not to be used for installation of any kind.

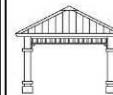
DRAWN BY: M.R.I.

DATE: 08/02/2010

MODEL: 12'x12' (AS) Gable End Mini Structure

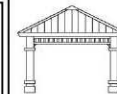
SHEET: 1

QUOTE #: EQ

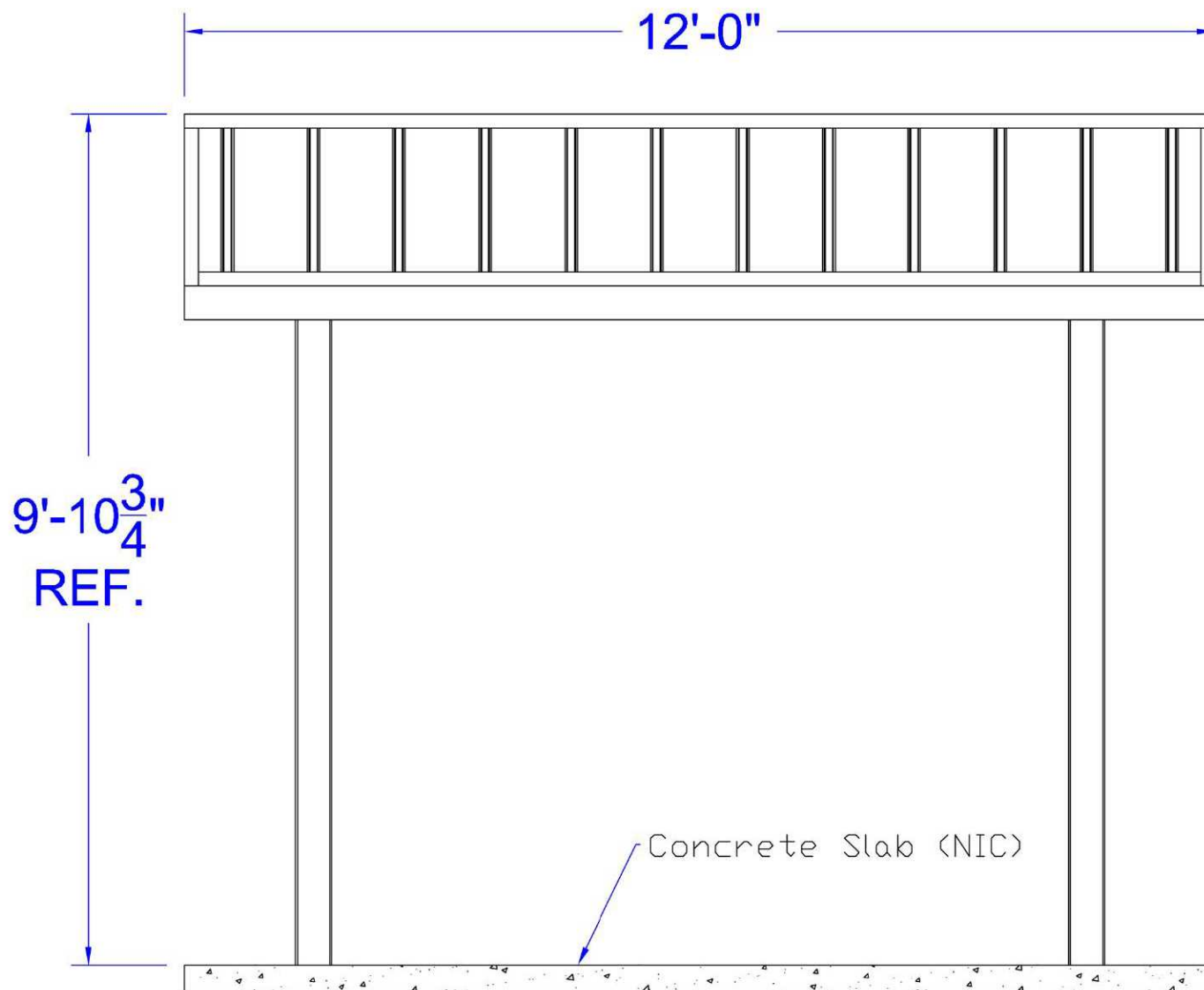




All quotation drawings are preliminary only,
not to be used for installation of any kind.



PRELIMINARY



TITLE: Elevation

MODEL: 12'x12' (AS) Gable End Mini Structure

DRAWN BY: M.R.I.

DATE: 08/02/2010

SHEET: 2

QUOTE #: EQ

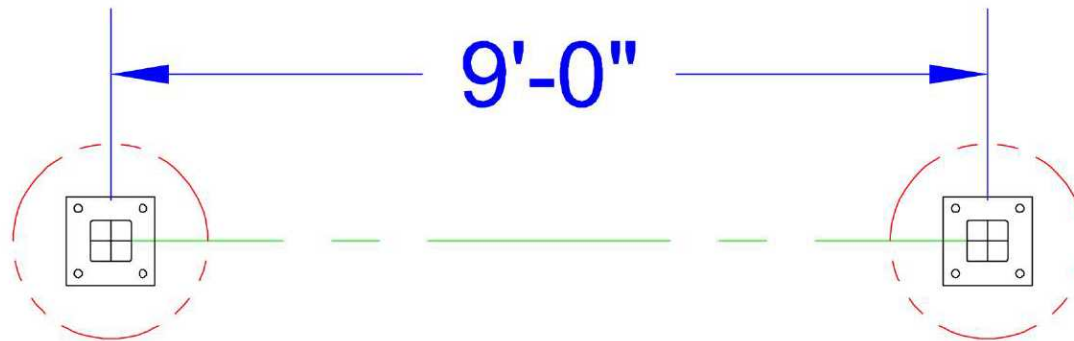




All quotation drawings are preliminary only,
not to be used for installation of any kind.



PRELIMINARY



Landscape

Elements



TITLE: Ground Plan

DRAWN BY: M.R.I. DATE: 08/02/2010

MODEL: 12'x12' (AS) Gable End Mini Structure

SHEET: 3

QUOTE #: EQ

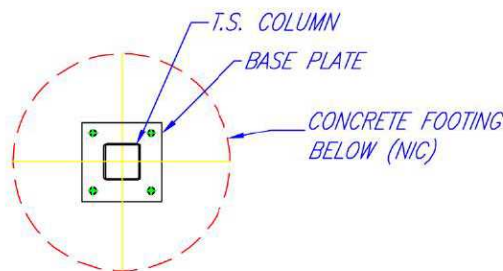




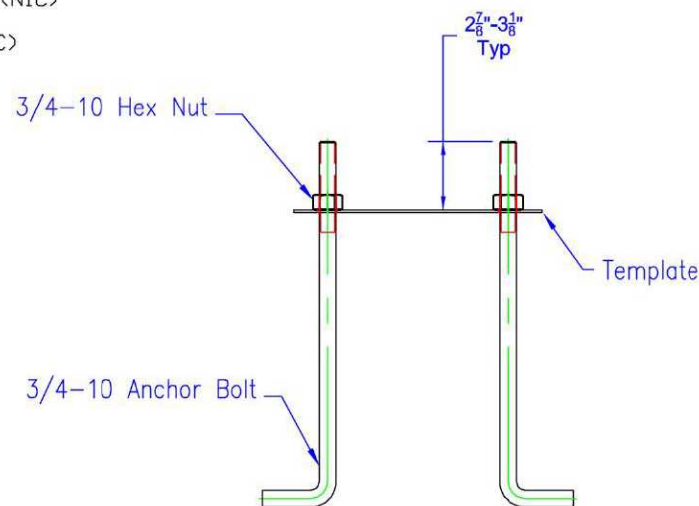
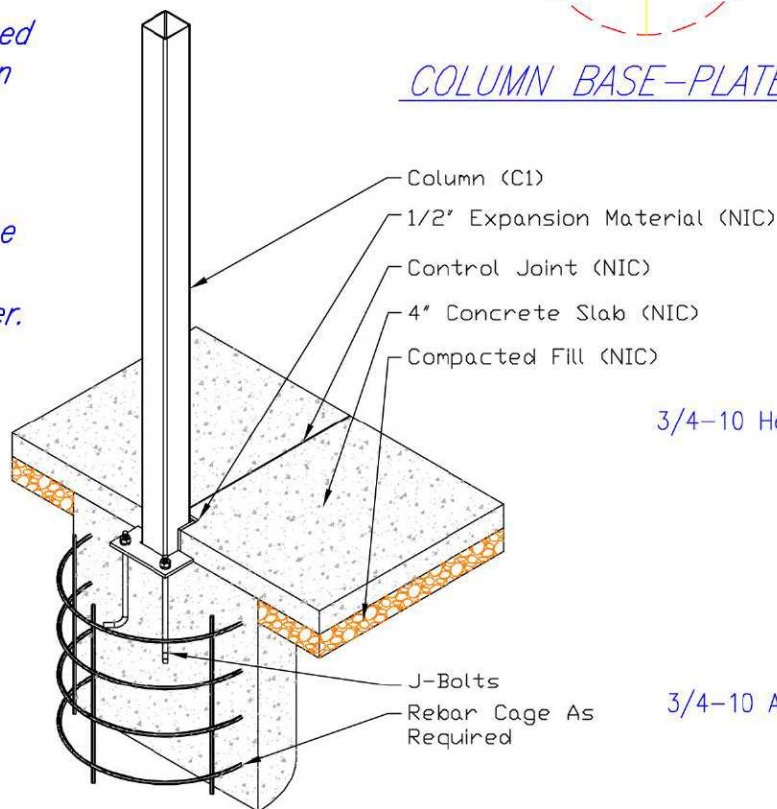
All quotation drawings are preliminary only,
not to be used for installation of any kind.

*DESIGN NOTE:

All foundation design information should be considered as preliminary only. A local soils engineer shall be retained to design the foundation according to local conditions and codes. Final design of the footing/foundation is the responsibility of the general contractor/owner.



COLUMN BASE-PLATE PLAN



ANCHOR BOLT TEMPLATE ASSEMBLY

PRELIMINARY



Elements

TITLE: Column Detail

DRAWN BY: M.R.I.

DATE: 08/02/2010

MODEL: 12'x12' (AS) Gable End Mini Structure

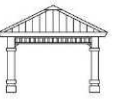
SHEET: 4

QUOTE #: EQ





All quotation drawings are preliminary only,
not to be used for installation of any kind.



STEEL & HARDWARE SHOP NOTES:

1. All structural steel tubing shall be ASTM A-500 Grade B.
2. All other steel (plates, gussets, etc.) shall be ASTM A-36.
3. All welding is to be done in accordance with latest AWS standards. All welds are to develop full strength of component parts. (E7081 Electrodes)
4. All bolts to be ASTM A-325 & threaded rod to be ASTM B-7.
5. All fabricated steel & structural tubes to be sand blasted to a white condition. Then Powder Coated To Meet Industry Standards.

ROOF MATERIAL:

24 Gauge R-Panel Pre-Cut Metal Roofing

ERECTION NOTES:

All members must be properly braced until the complete structural system has been constructed.

NOTE:

This building has been designed as a free standing, open structure. If walls are to be added, or if the building is to adjoin another structure, or if other modifications are to be made, the structure must be reengineered prior to these modifications.

THIS DOCUMENT CONTAINS PROPRIETARY INFORMATION AND IS NOT TO BE REPRODUCED WITHOUT THE WRITTEN PERMISSION FROM LITCHFIELD INDUSTRIES, INC. AND/OR IS NOT TO BE USED IN ANY MANNER DETRIMENTAL TO THE INTEREST OF LITCHFIELD INDUSTRIES, INC.

N.I.C. = NOT IN CONTRACT

TITLE: General Notes

MODEL: 12'x12' (AS) Gable End Mini Structure

DRAWN BY: M.R.I. DATE: 08/02/2010

SHEET: 5

QUOTE #: EQ

