

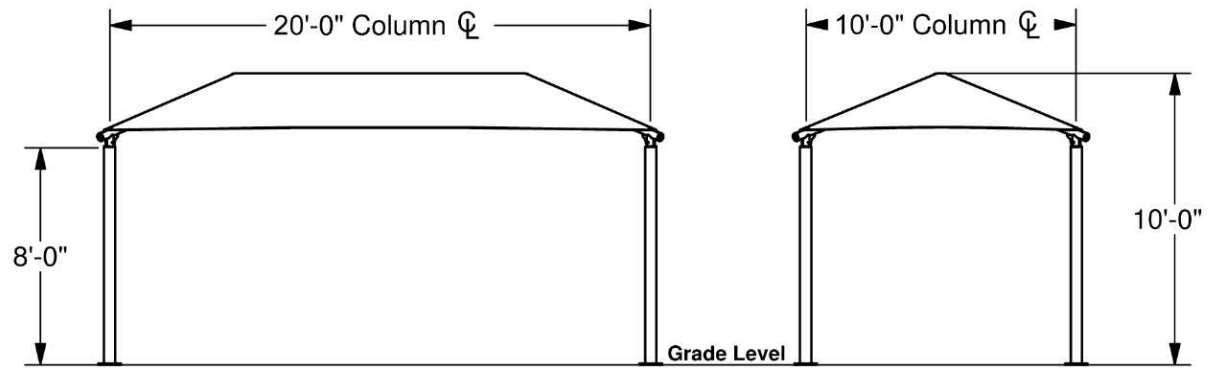
RECTANGLE HIP SHADE

10' x 20' x 8'

MODEL #:

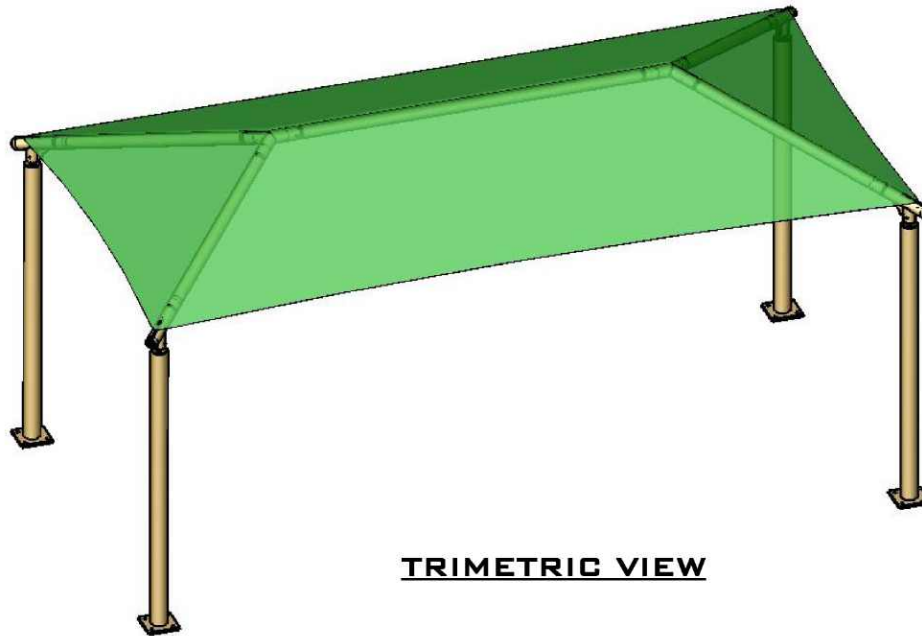
RD102008SG (With Glide Elbows)

RD102008SN (Without Glide Elbows)

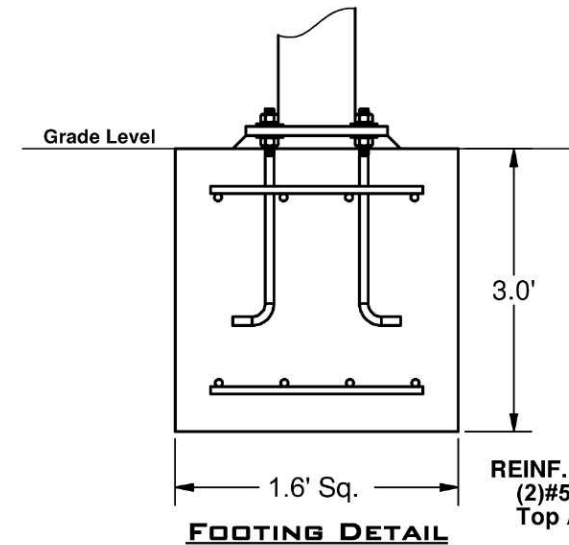


FRONT VIEW

SIDE VIEW



TRIMETRIC VIEW



REINF.
(2)#5 EW
Top And Bottom

*Footing design based
on 1500 PSF soil
bearing pressure.

FURNITURE LEISURE INC

1.800.213.2401

www.FurnitureLeisure.com
www.PicnicFurniture.com
www.ParkTables.com

www.PoolFurnitureSupply.com
www.PicnicTableSupplier.com
www.UBrace.com

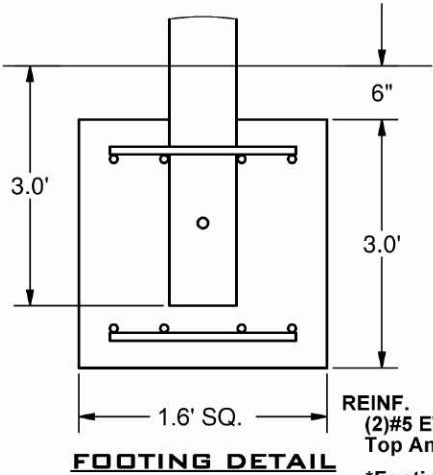
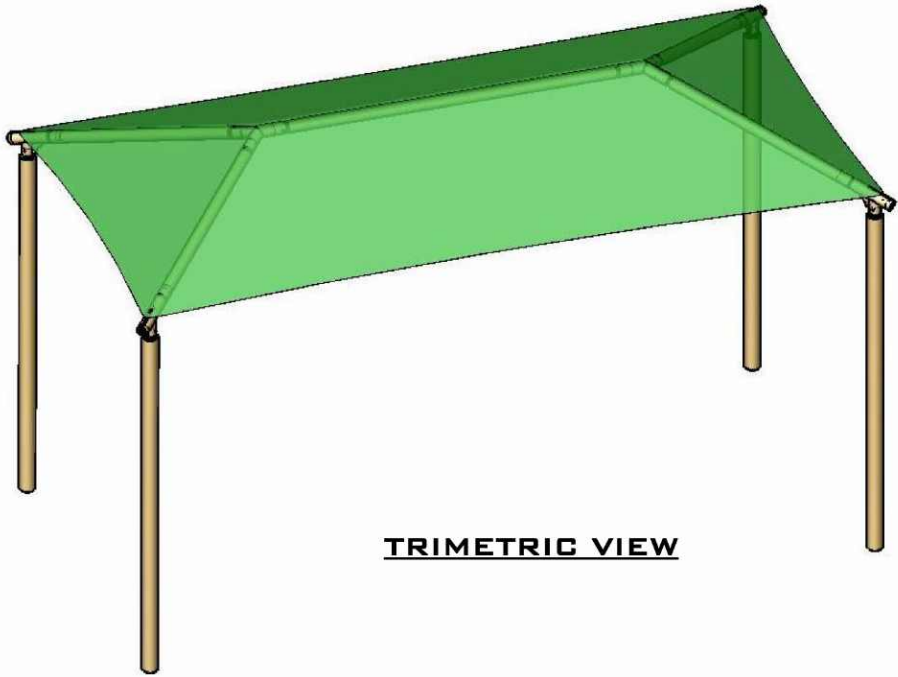
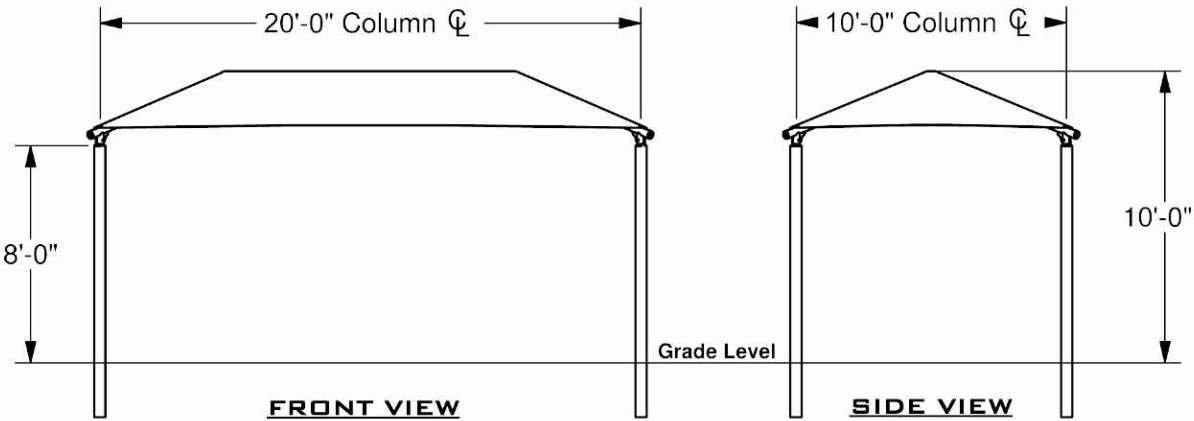
These drawings are for reference only and should not be used as construction details. Materials, fasteners, and foundations are subject to change if professionally sealed engineering drawings are required. Designed for 93 MPH Basic Wind Speed.

RECTANGLE HIP SHADE

10' x 20' x 8'

MODEL #:
RD102008IG (With Glide Elbows)
RD102008IN (Without Glide Elbows)

REF.#	PART DESCRIPTION	QTY.
1	Ø3.5" Capped Embedded Column	4
2	Angled Elbow	4
3	Ø2.88" Hip Rafter w/ Swaged End	4
4	Ø2.88" Ridge Pole w/ Swaged Ends	1
5	Rectangle "Y" Connection	2
6	Fabric Cover w/ Cable Insert	1
7	Frame Hardware Kit	1



*Footing design based on 1500 PSF soil bearing pressure.

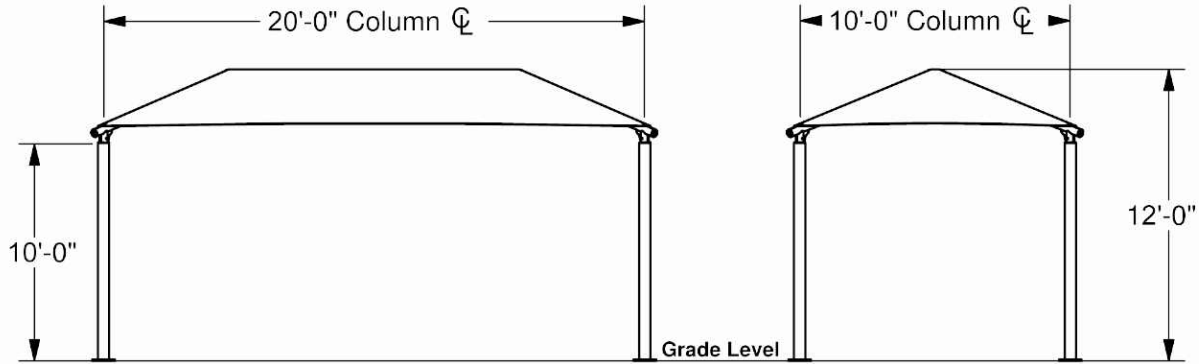
These drawings are for reference only and should not be used as construction details. Materials, fasteners, and foundations are subject to change if professionally sealed engineering drawings are required. Designed for 93 MPH Basic Wind Speed.

RECTANGLE HIP SHADE

10' x 20' x 10'

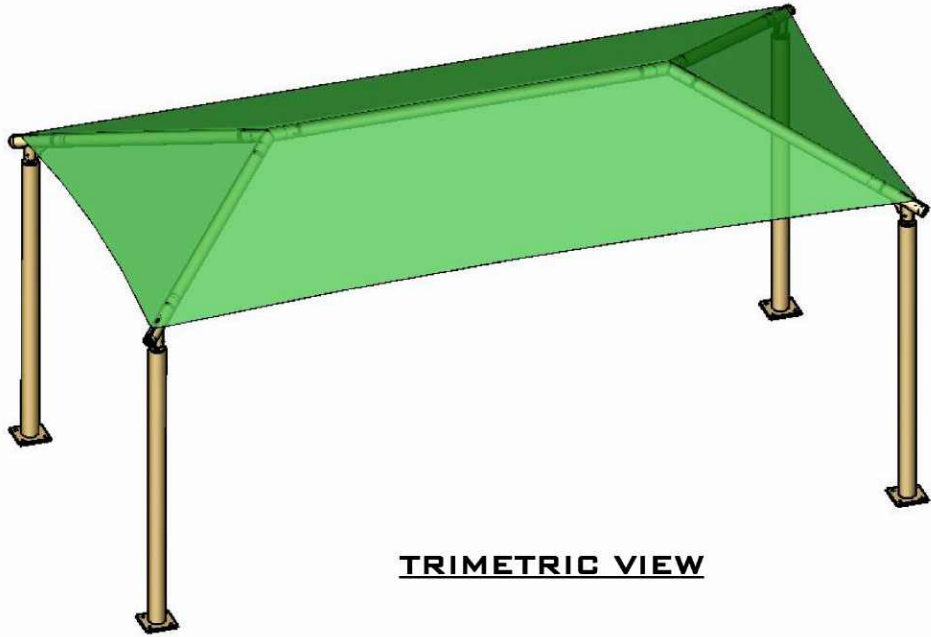
MODEL #:
RD102010SG (With Glide Elbows)
RD102010SN (Without Glide Elbows)

REF.#	PART DESCRIPTION	QTY.
1	Ø5.0" Capped Surface Mount Column	4
2	Angled Elbow	4
3	Ø2.88" Hip Rafter w/ Swaged End	4
4	Ø2.88" Ridge Pole w/ Swaged Ends	1
5	Rectangle "Y" Connection	2
6	Fabric Cover w/ Cable Insert	1
7	Frame Hardware Kit	1

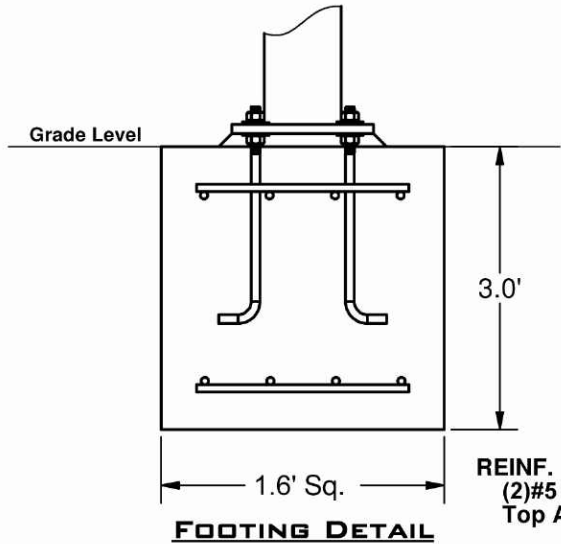


FRONT VIEW

SIDE VIEW



TRIMETRIC VIEW



REINF.
(2)#5 EW
Top And Bottom

*Footing design based
on 1500 PSF soil
bearing pressure.

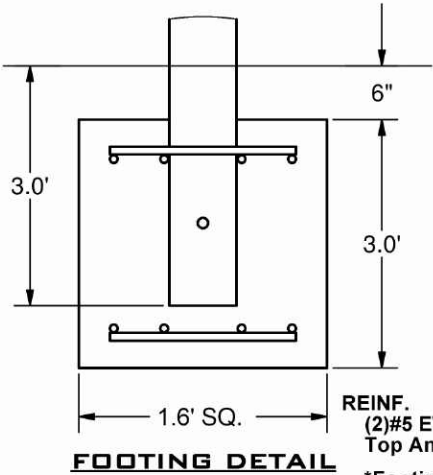
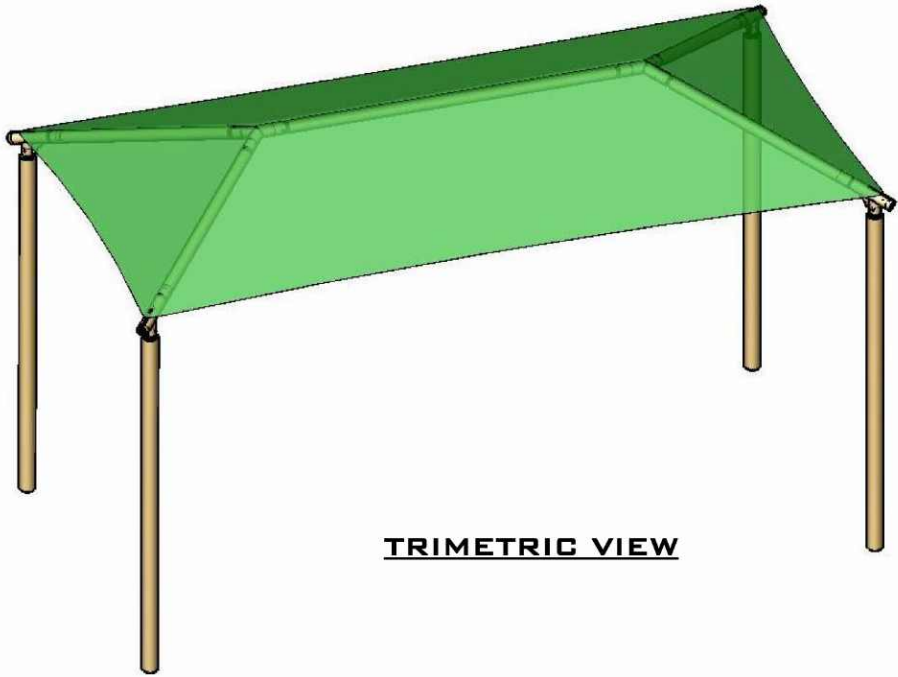
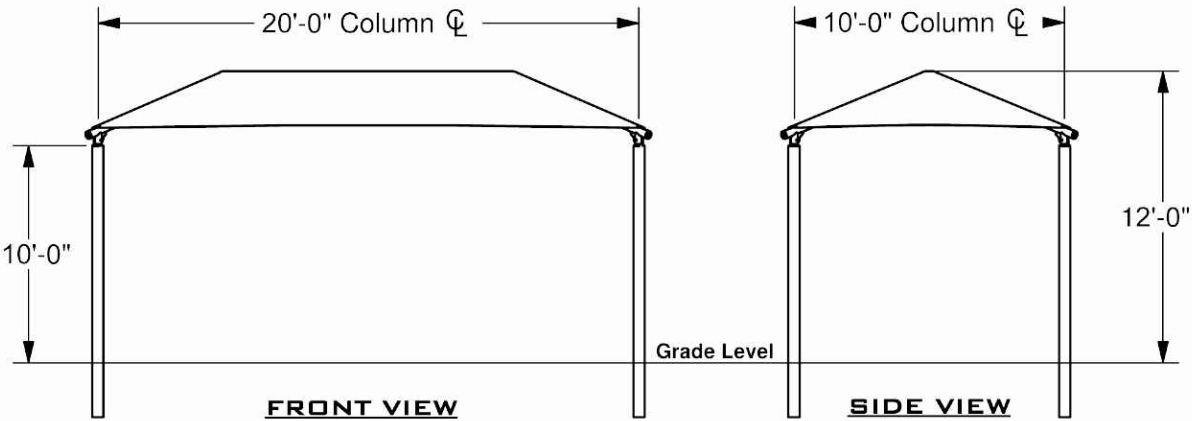
These drawings are for reference only and should not be used as construction details. Materials, fasteners, and foundations are subject to change if professionally sealed engineering drawings are required. Designed for 93 MPH Basic Wind Speed.

RECTANGLE HIP SHADE

10' x 20' x 10'

MODEL #:
RD102010IG (With Glide Elbows)
RD102010IN (Without Glide Elbows)

REF.#	PART DESCRIPTION	QTY.
1	Ø5.0" Capped Embedded Column	4
2	Angled Elbow	4
3	Ø2.88" Hip Rafter w/ Swaged End	4
4	Ø2.88" Ridge Pole w/ Swaged Ends	1
5	Rectangle "Y" Connection	2
6	Fabric Cover w/ Cable Insert	1
7	Frame Hardware Kit	1



*Footing design based on 1500 PSF soil bearing pressure.

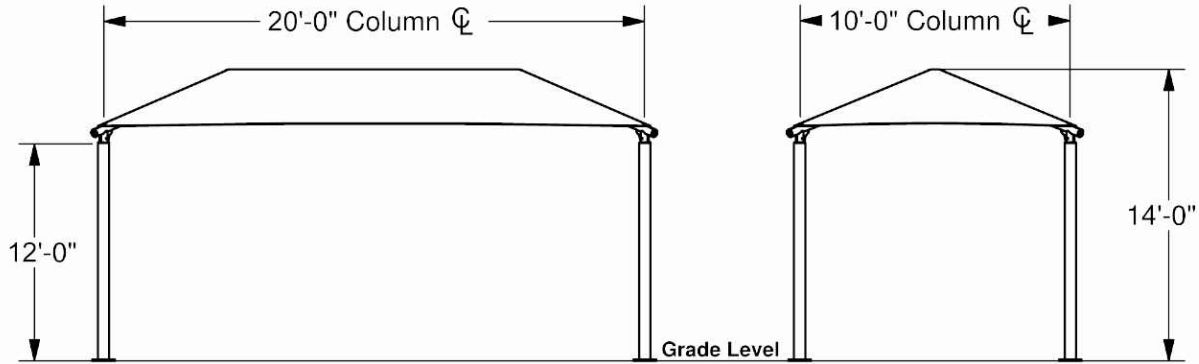
These drawings are for reference only and should not be used as construction details. Materials, fasteners, and foundations are subject to change if professionally sealed engineering drawings are required. Designed for 93 MPH Basic Wind Speed.

RECTANGLE HIP SHADE

10' x 20' x 12'

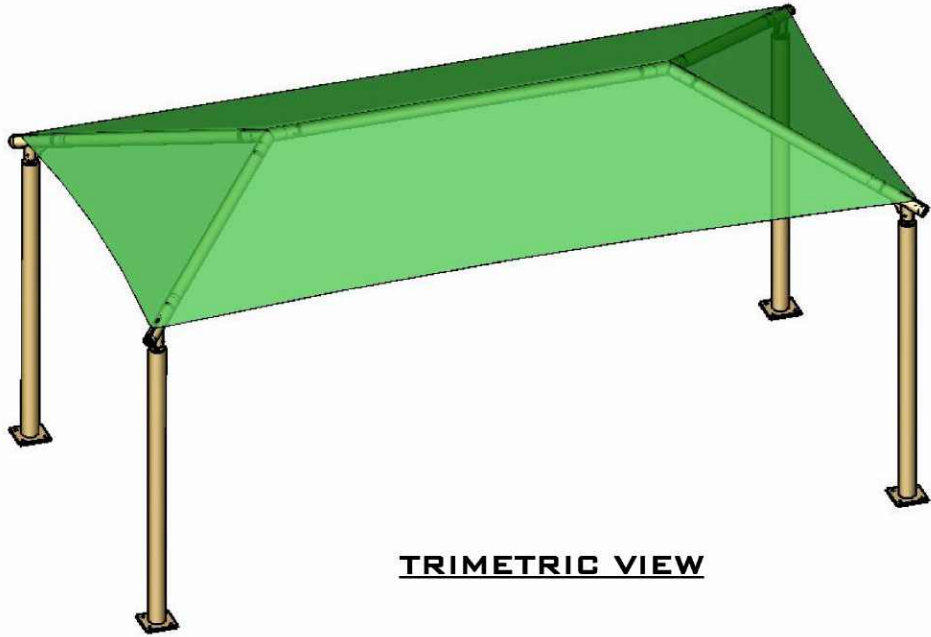
MODEL #:
RD102012SG (With Glide Elbows)
RD102012SN (Without Glide Elbows)

REF.#	PART DESCRIPTION	QTY.
1	Ø5.0" Capped Surface Mount Column	4
2	Angled Elbow	4
3	Ø2.88" Hip Rafter w/ Swaged End	4
4	Ø2.88" Ridge Pole w/ Swaged Ends	1
5	Rectangle "Y" Connection	2
6	Fabric Cover w/ Cable Insert	1
7	Frame Hardware Kit	1

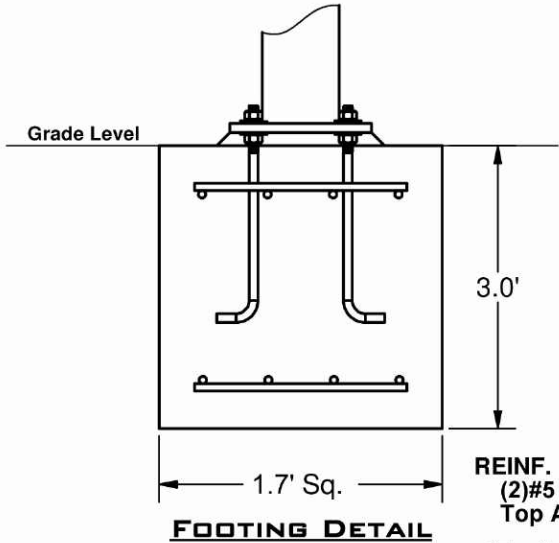


FRONT VIEW

SIDE VIEW



TRIMETRIC VIEW



REINF.
(2)#5 EW
Top And Bottom

*Footing design based
on 1500 PSF soil
bearing pressure.

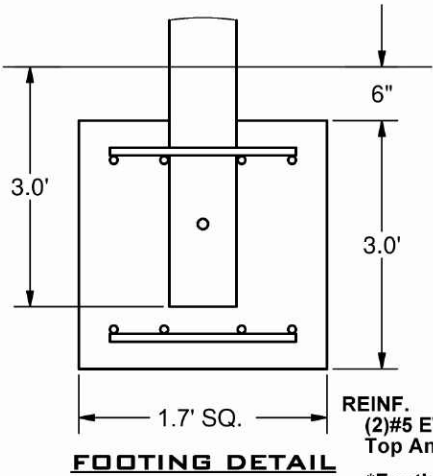
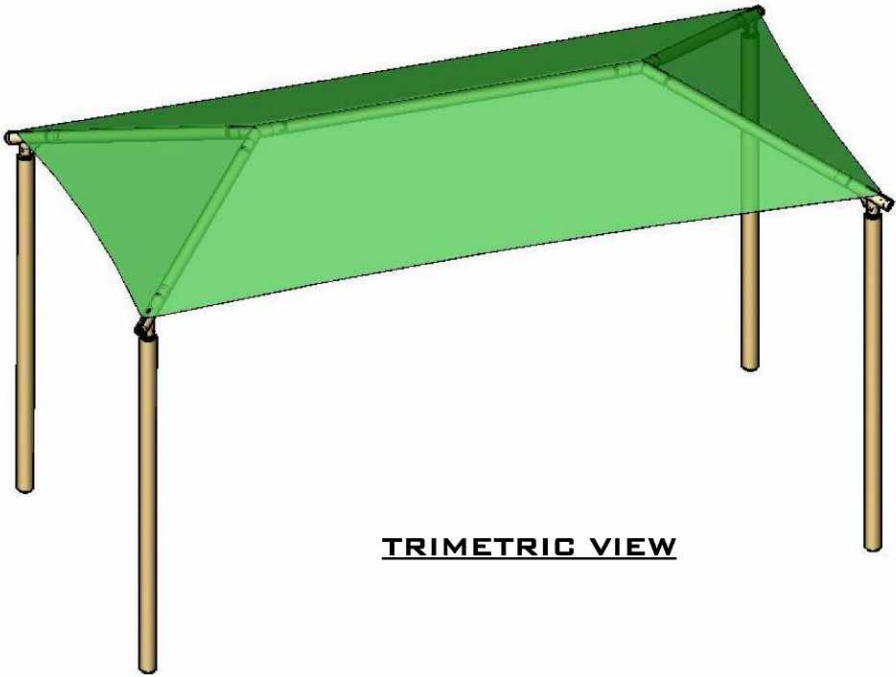
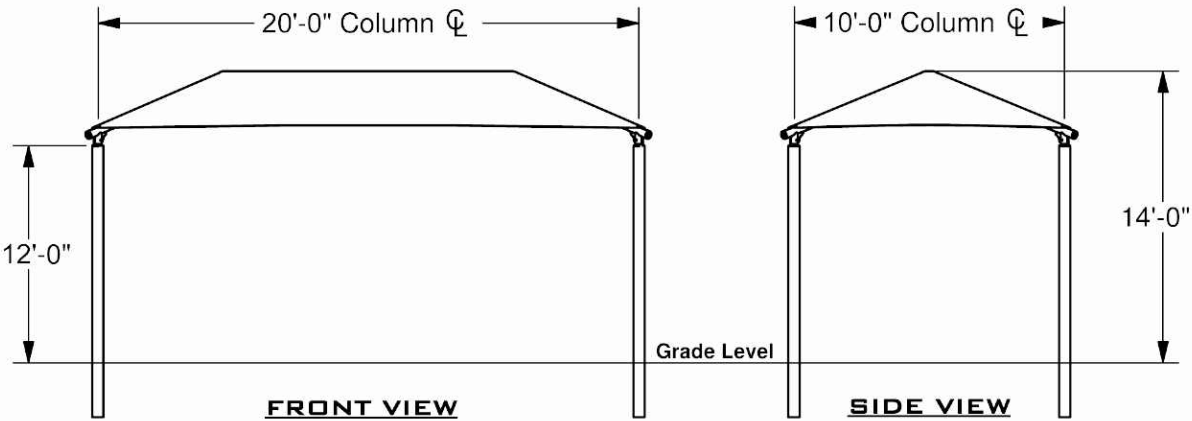
These drawings are for reference only and should not be used as construction details. Materials, fasteners, and foundations are subject to change if professionally sealed engineering drawings are required. Designed for 93 MPH Basic Wind Speed.

RECTANGLE HIP SHADE

10' x 20' x 12'

MODEL #:
RD102012IG (With Glide Elbows)
RD102012IN (Without Glide Elbows)

REF.#	PART DESCRIPTION	QTY.
1	Ø5.0" Capped Embedded Column	4
2	Angled Elbow	4
3	Ø2.88" Hip Rafter w/ Swaged End	4
4	Ø2.88" Ridge Pole w/ Swaged Ends	1
5	Rectangle "Y" Connection	2
6	Fabric Cover w/ Cable Insert	1
7	Frame Hardware Kit	1



*Footing design based on 1500 PSF soil bearing pressure.

These drawings are for reference only and should not be used as construction details. Materials, fasteners, and foundations are subject to change if professionally sealed engineering drawings are required. Designed for 93 MPH Basic Wind Speed.