

TR55

55 GALLON TRASH RECEPTACLE

FURNITURE LEISURE INC

OUR LIST OF WEB STORES

www.FurnitureLeisure.com
www.PicnicFurniture.com
www.ParkTables.com

www.PoolFurnitureSupply.com
www.PicnicTableSupplier.com
www.UBrace.com

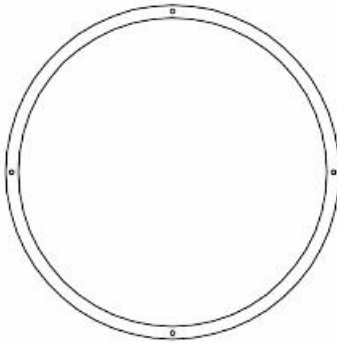
1.800.213.2401



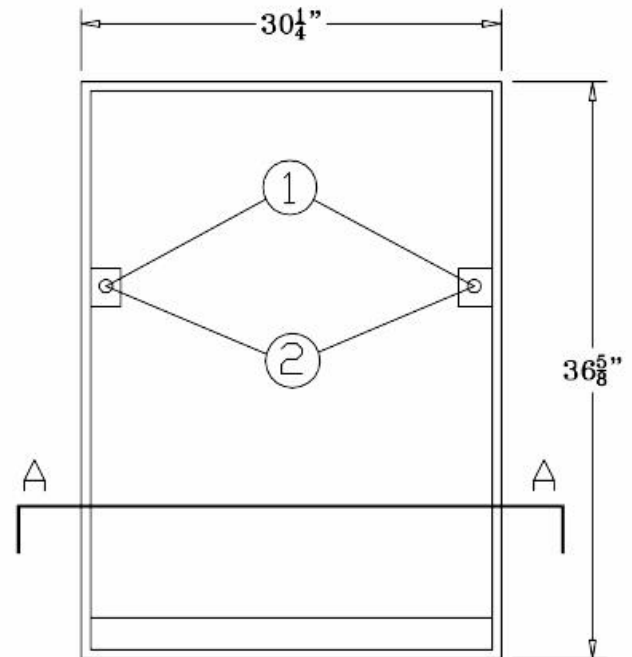
Please take the time to locate and identify each part. Assemble the units on a smooth flat surface. It is also helpful to lay the tops and seats on cardboard or a drop cloth to prevent scratching of the surface during assembly. All parts have been pre-cut and pre-drilled for ease of assembly. All holes are slotted to allow for easy assembly and for final levelling of tops and seats to frames. Fully assemble all parts without totally tightening nuts and bolts. After all assembled go back and retighten nuts to bolts. DO NOT OVER TIGHTEN NUTS TO BOLTS. Over tightened nuts can crack the plastisol coating. All the necessary quantities of parts required are listed in this assembly instructions.

DO NOT BEGIN ASSEMBLY UNTIL YOU HAVE READ THESE INSTRUCTIONS AND ARE FAMILIAR WITH THE PARTS.

1	WASHER & LOCK NUT
2	CAP. BOLT & WASHER



BOTTOM VIEW A-A



SPECIFICATIONS

36" X 29" POLY VINYL COATED #9 EXPANDED METAL TRASH RECEPTACLE.

COATED WITH A 1/8" TO 1/4" THICK PLASTISOL ULTRAVIOLET STABILIZED VINYL COATING FUSED AND BAKED TO A 90% GLOSS.

36" TALL X 26 5/8" DIAMETER. 55 GALLON CAN SIZE **(NOT INCLUDED)**.

WEBCOAT TRASH RECEPTACLES ARE FABRICATED IN TWO HALVES TO ALLOW THE OVEN BAKING PROCESS TO CURE THE INSIDE AND THE OUTSIDE TO THE MAXIMUM TOUGHNESS. THE TWO HALVES ARE THEN ASSEMBLED TOGETHER AT THE FACTORY BEFORE SHIPPING TO MAXIMIZE EASE OF INSTALLATION ON SITE. BOTTOM AND TOPS OF BODY ARE BORDERED WITH 1/4" X 1 1/2" FLAT STEEL.

OPTIONAL RIGID PLASTIC LINERS ARE AVAILABLE AT ADDITIONAL CHARGE. STANDARD COLOR IS GRAY. STANDARD FRAME IS PORTABLE DESIGN, INGROUND AND SURFACE MOUNTS ARE AVAILABLE AT ADDITIONAL COST.

ALL HARDWARE IS NON-CORROSIVE.
WEIGHT FOR THE TR55 IS 120 LB.

MAINTENANCE

To maintain luster it is recommended to wash, rinse, and dry the units after prolonged use. Check for loose bolts and nuts and tighten as needed. Contact the factory for genuine Webcoat part replacements if needed.