

CANTILEVER/ CAR PARKING SHADE

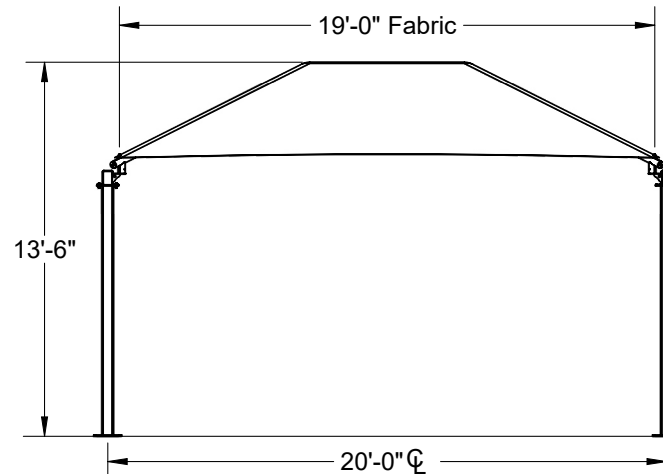
20' x 18' x 10'

MODEL #:

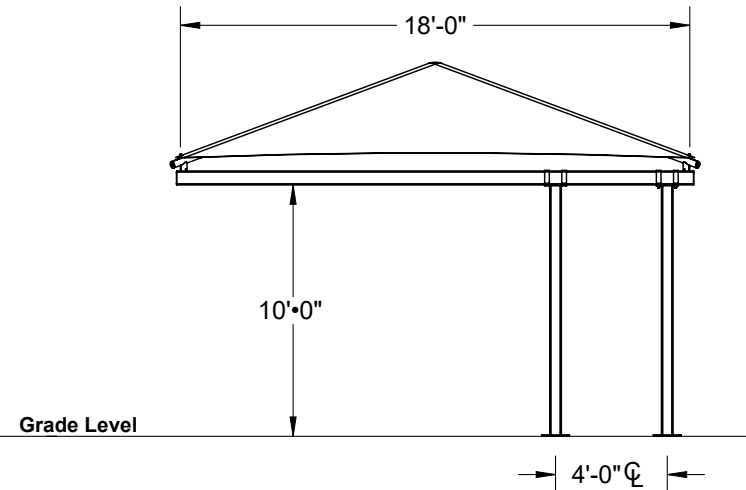
RC201810SG (With Glide Elbows)

RC201810SN (Without Glide Elbows)

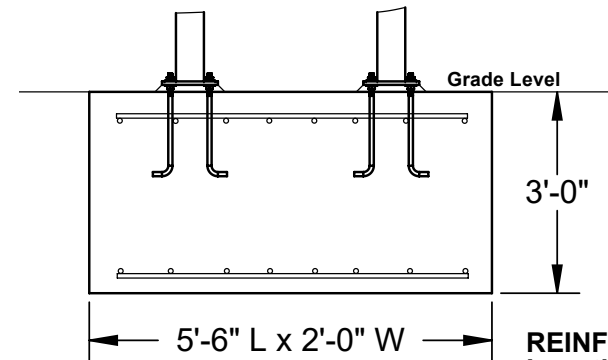
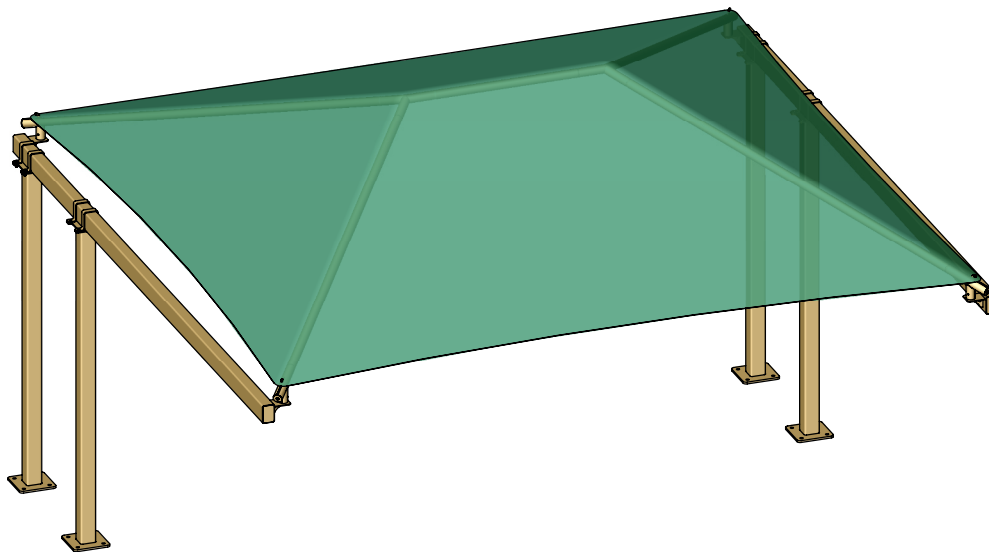
REF.#	PART DESCRIPTION	QTY.
1	5" Sq. Surface Mount Column	4
2	4" x 6" Beam With Platform Caps	2
3	Ø2 7/8" Angled Elbow	4
4	Ø2 7/8" Hip Rafter w/ Swaged End	4
5	Ø2 7/8" Ridge Pole w/ Swaged Ends	1
6	Ø2 7/8" Rectangle "Y" Connection	2
7	Fabric Cover With Cable Insert	1
8	Frame Hardware Kit	1



FRONT ELEVATION



END ELEVATION



FOOTING DETAIL

*Footing design based on 1500
PSF soil bearing pressure.

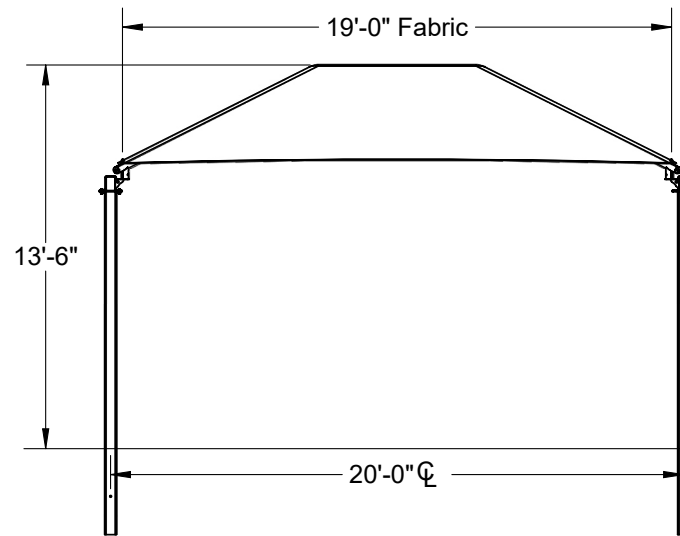
REINF:
Length: (2)#5 x 60"
Width: (7)#5 x 18"

CANTILEVER/ CAR PARKING SHADE

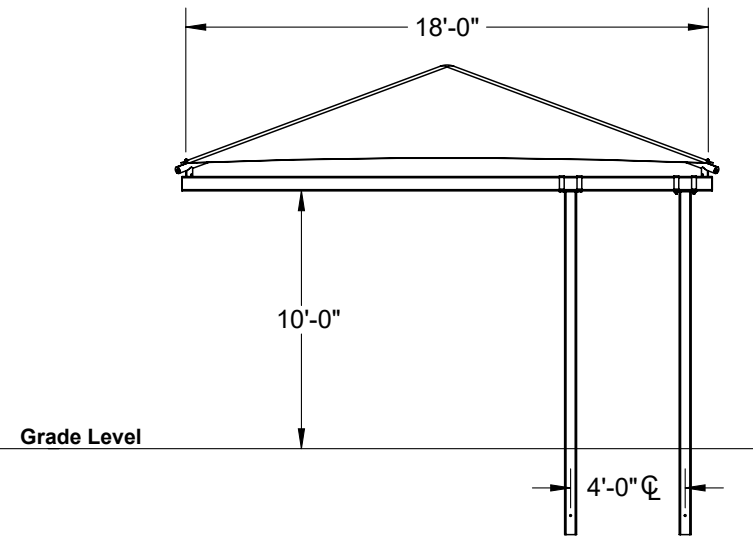
20' x 18' x 10'

MODEL #:
RC201810IG (With Glide Elbows)
RC201810IN (Without Glide Elbows)

REF.#	PART DESCRIPTION	QTY.
1	5" Sq. Surface Mount Column	4
2	4" x 6" Beam With Platform Caps	2
3	Ø2 7/8" Angled Elbow	4
4	Ø2 7/8" Hip Rafter w/ Swaged End	4
5	Ø2 7/8" Ridge Pole w/ Swaged Ends	1
6	Ø2 7/8" Rectangle "Y" Connection	2
7	Fabric Cover With Cable Insert	1
8	Frame Hardware Kit	1



FRONT ELEVATION



END ELEVATION

