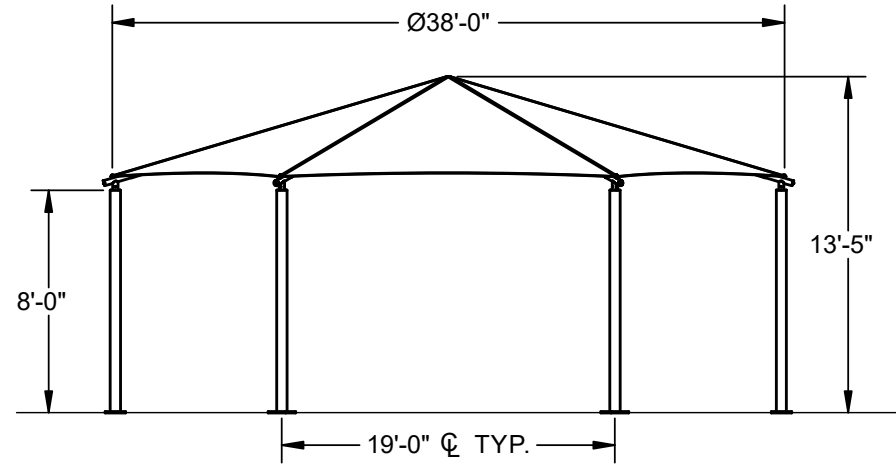


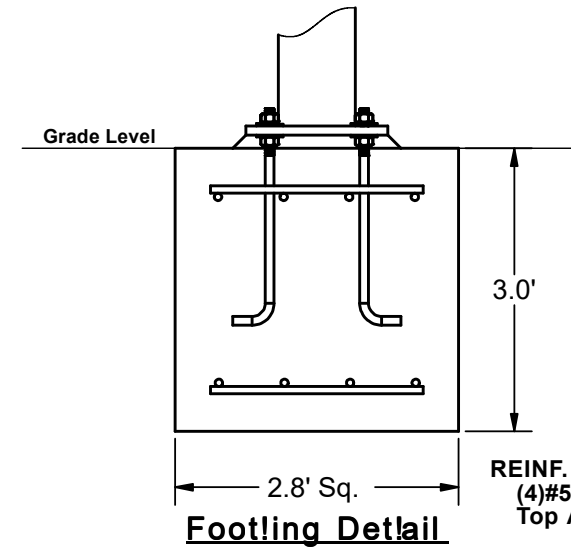
HEXAGON HIP SHADE

38' x 38' x 8'

MODEL #:
 HD383808SG (With Glide Elbows)
 HD383808SN (Without Glide Elbows)



ELEVATION VIEW



REINF.
(4)#5 EW
Top And Bottom

*Footing design based on 1500 PSF soil bearing pressure.

Footling Detail

REF.#	PART DESCRIPTION	QTY.
1	Ø5.0"Column - Surface Mount	6
2	Ø5.0"Hub - With Six Sockets	1
3	Ø3.5"Rafter - Swaged	6
4	Angled Elbow	6
5	Fabric - With Cable Insert	1
6	Frame Hardware Kit	1

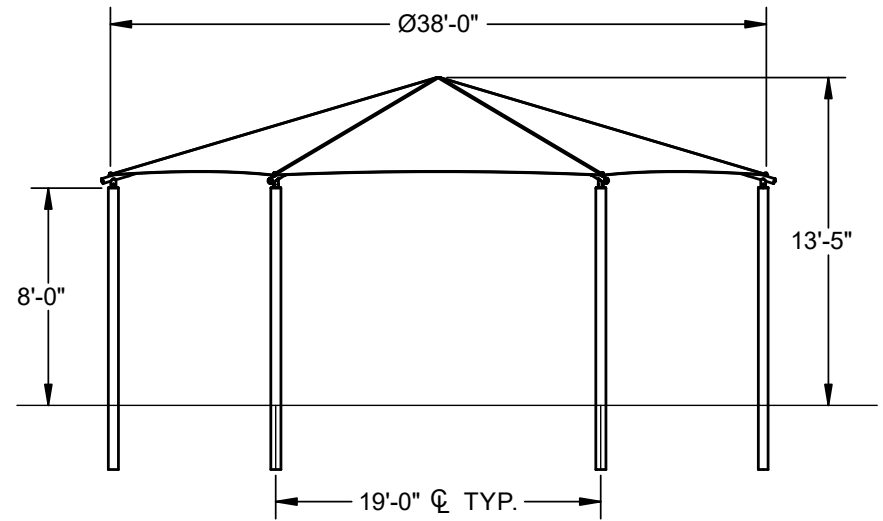
HEXAGON HIP SHADE

38' x 38' x 8'

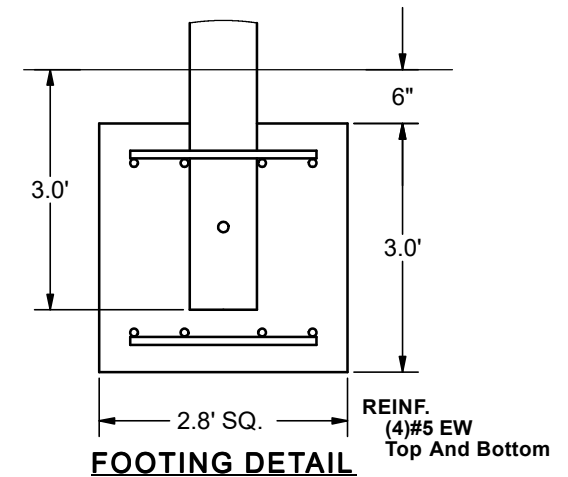
MODEL #:

HD383808IG (With Glide Elbows)

HD383808IN (Without Glide Elbows)



ELEVATION VIEW



FOOTING DETAIL

*Footing design based on 1500 PSF soil bearing pressure.

REF.#	PART DESCRIPTION	QTY.
1	Ø5.0"Column - Embedded	6
2	Ø5.0"Hub - With Six Sockets	1
3	Ø3.5"Rafter - Swaged	6
4	Angled Elbow	6
5	Fabric - With Cable Insert	1
6	Frame Hardware Kit	1