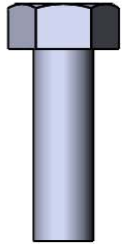
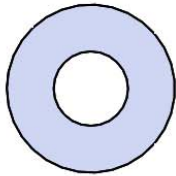


Model # B8WBROLLP

HARDWARE



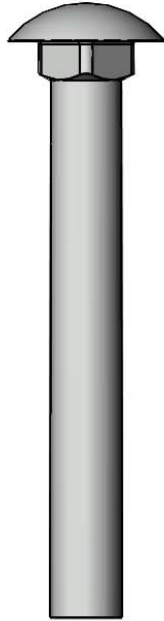
5/16" x 1"
Machine Bolt



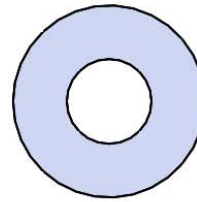
5/16" Washer



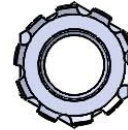
5/16" Kep Nut



3/8" x 3"
Carriage Bolt



3/8" Washer



3/8" Kep Nut

PRODUCT SPECIFICATIONS

B8WBROLLP PORTABLE BENCH WITH BACK

Seats & Back: 7 gauge laser cut end plates for a smooth finish. $\frac{3}{4}$ " x #9 steel expanded metal, rolled to a 3" diameter on both sides. 7 gauge x 1-1/2" flat bar center support and mounting bracket understructure. Electrically MIG welded.

Coating: Oven fused functionalized polyethylene copolymer-based thermoplastic. Fluidized bed coating application with superior mechanical performance, impact resistance and UV-stability.

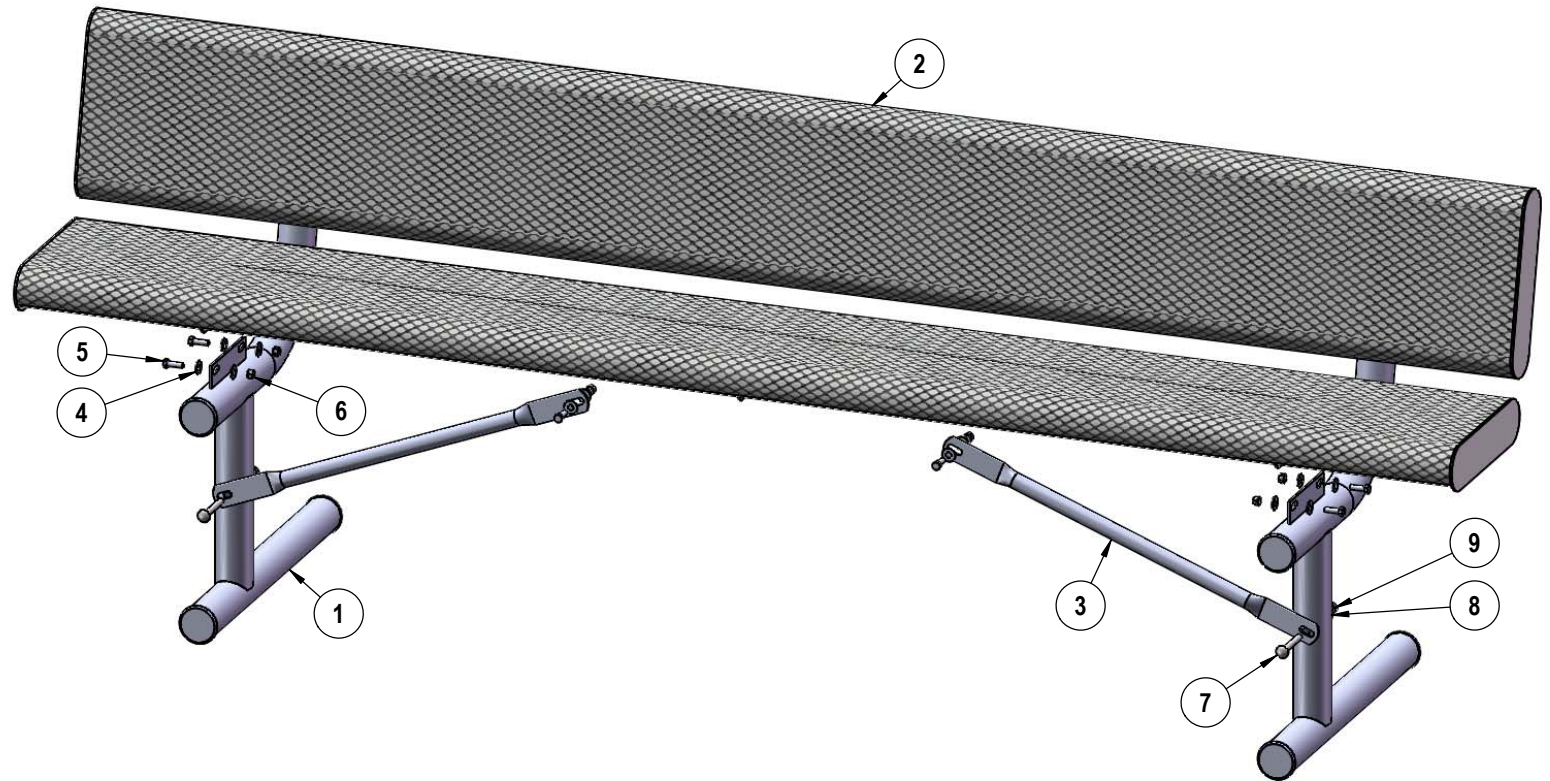
Frame: 2-3/8" O.D. x 12 gauge pre-galvanized structural steel tubing. Seat/back support is bent over a mandrel through the bend radius producing a wrinkle free bend. Tube ends are pre-galvanized steel capped. Seat mounting points are 7 gauge x 1-1/2" die stamped steel flat bar. Cross braces are 1" O.D. x 16 gauge pre-galvanized structural steel tubing. All electrically MIG welded.

Frame Coating: Electrostatic powder coated application oven cured.

Hardware: All stainless steel hardware fasteners.

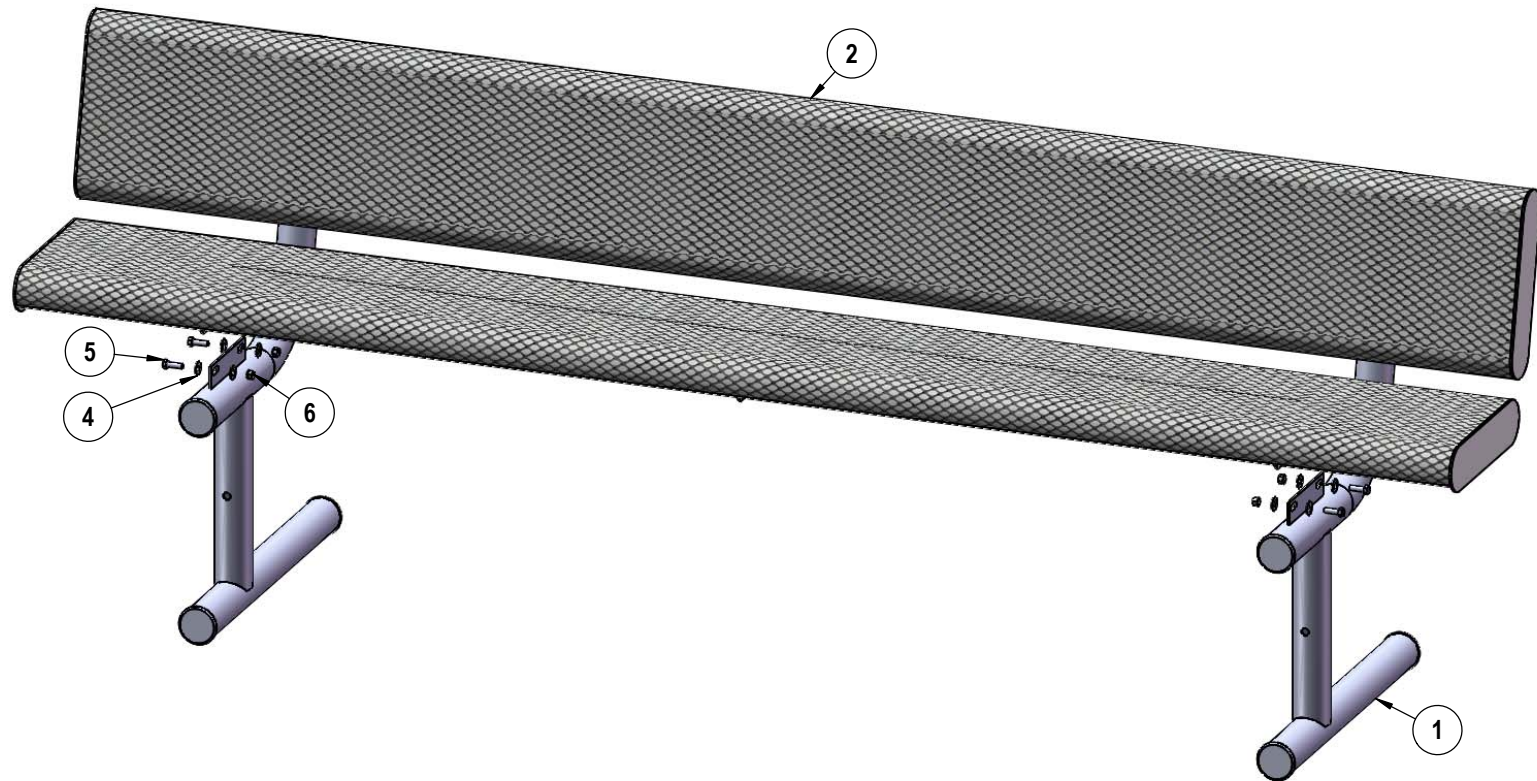
Dimensions: 8' bench portable with back. Seats and back are 12" wide x 96" long. Seat height is 19-1/2", seat back height is 35-1/4". Total depth of seat with back is 22-1/4".

COMPONENTS



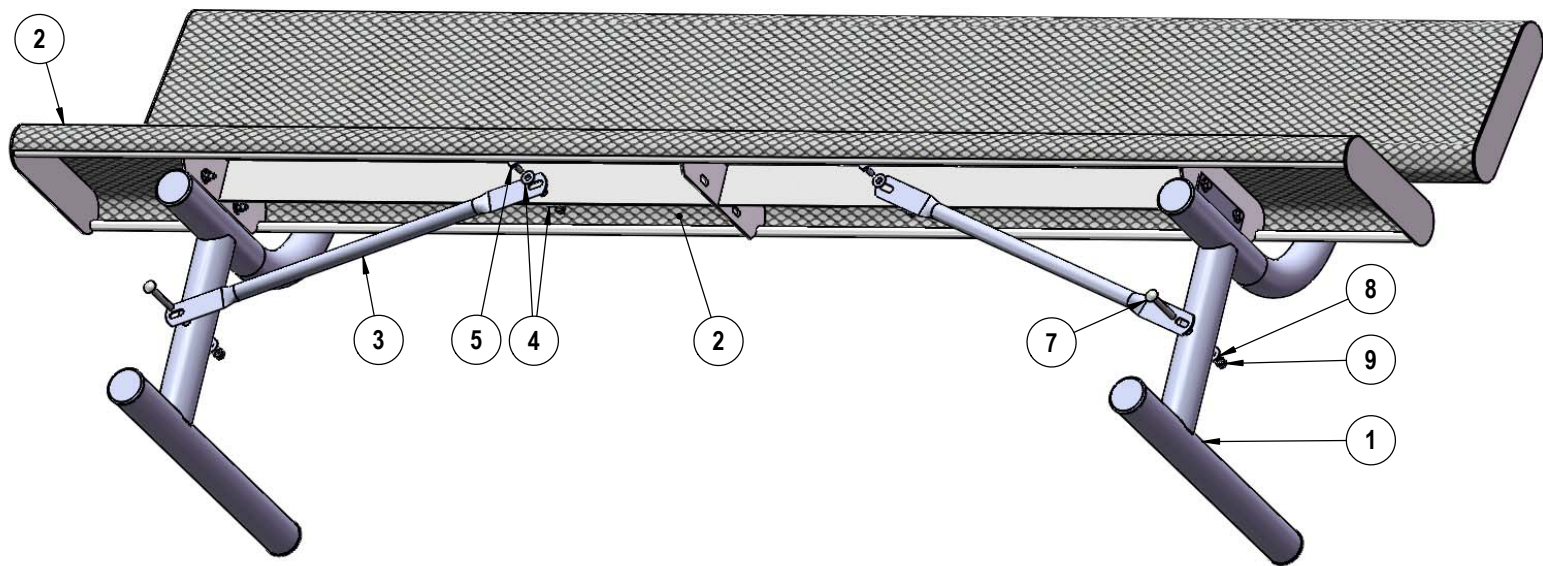
| ITEM NO. | PartNo | DESCRIPTION | QTY. |
|----------|--------------|------------------------------|------|
| 1 | P-V940P | 940P Vinyl Leg | 2 |
| 2 | T-VR96-S | 8' Vinyl Rolled Seat | 2 |
| 3 | P-01-04-0129 | 26 3/4" Brace | 2 |
| 4 | 33-02-0007 | 5/16" SS Washer | 20 |
| 5 | 33-05-0029 | 5/16" x 1" Machine Bolt (SS) | 10 |
| 6 | 33-03-0012 | 5/16" Keps Nut (SS) | 10 |
| 7 | 33-06-0058 | 3/8" x 3" Carriage Bolt (SS) | 2 |
| 8 | 33-02-0008 | 3/8" Flat Washer (SS) | 2 |
| 9 | 33-03-0013 | 3/8" Keps Nut (SS) | 2 |

STEP 1



Attach the Punched Seat to the legs using specified hardware.

STEP 2



Attach the 26 3/4" Braces to the Seat and legs as shown using specified hardware.

OVERALL DIMENSIONS

