

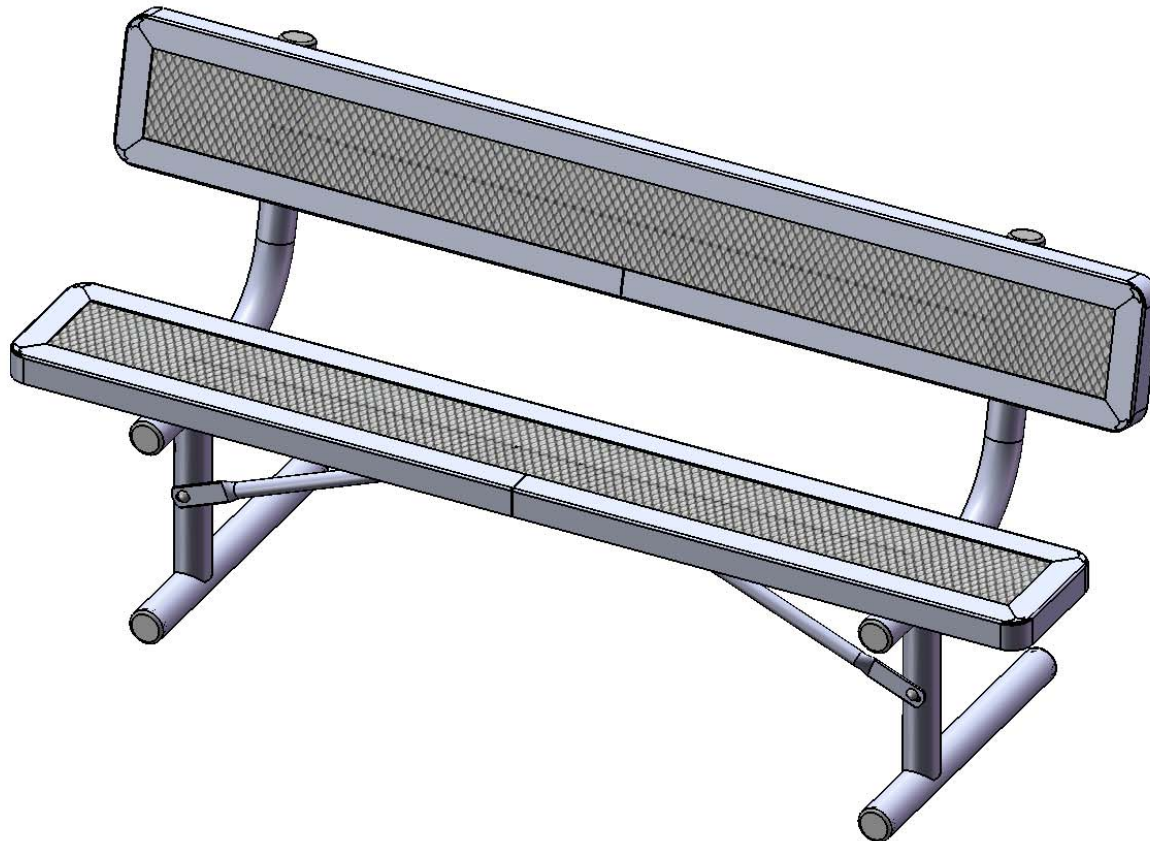


Furniture Leisure

Commercial Site Furnishings

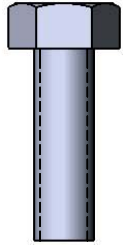
FurnitureLeisure.com PoolFurnitureSupply.com
PicnicFurniture.com PicnicTableSupplier.com
ParkTables.com UBrace.com

1-800-213-2401 | sales@furnitureleisure.com

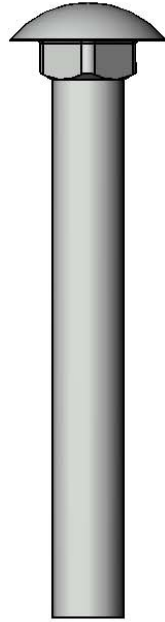


Model # B6WBRCP

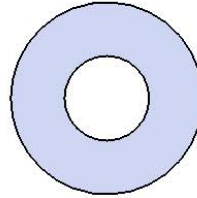
HARDWARE



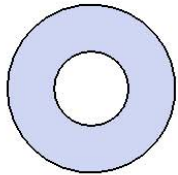
5/16" x 1"
Machine Bolt



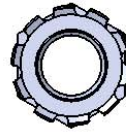
3/8" x 3-1/2"
Carriage Bolt



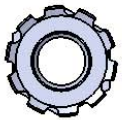
3/8" Washer



5/16" Washer

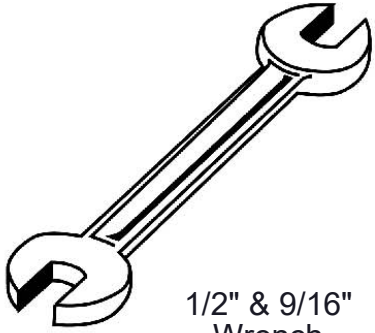


3/8" Kep Nut



5/16" Kep Nut

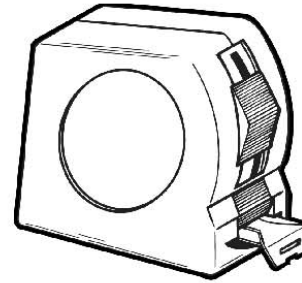
TOOLS REQUIRED



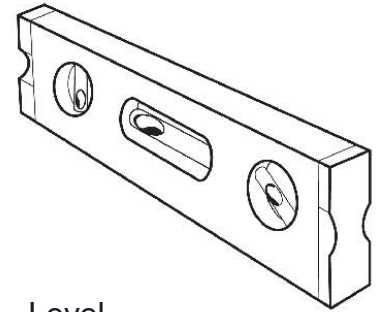
1/2" & 9/16"
Wrench



1/2" & 9/16"
Socket Wrench



Tape Measure



Level

PRODUCT SPECIFICATIONS

B6WBRCP PORTABLE BENCH WITH BACK

Seats & Back: Angle frame made with 2" x 2" x 1/8" structural steel angle. 3/4" #9 steel expanded metal. 10 gauge x 1-1/2" flat bar center support and mounting bracket understructure. Electrically MIG welded.

Coating: Oven fused functionalized polyethylene copolymer-based thermoplastic. Fluidized bed coating application with superior mechanical performance, impact resistance and UV-stability.

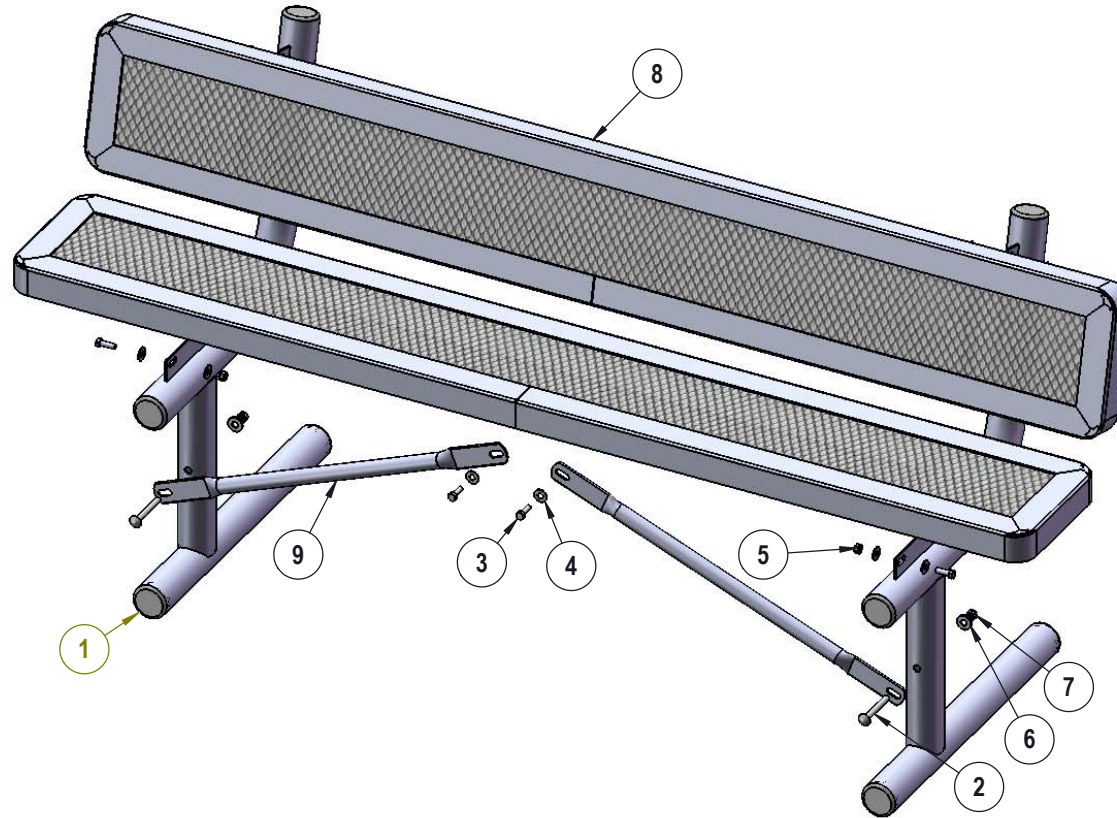
Frame: 2-3/8" O.D. x 12 gauge pre-galvanized structural steel tubing. Seat/back support is bent over a mandrel through the bend radius producing a wrinkle free bend. Tube ends are pre-galvanized steel capped. Seat mounting points are 7 gauge x 1-1/2" die stamped steel flat bar. Cross braces are 1" O.D. x 16 gauge pre-galvanized structural steel tubing. All electrically MIG welded.

Frame Coating: Electrostatic powder coated application oven cured.

Hardware: All stainless steel hardware fasteners.

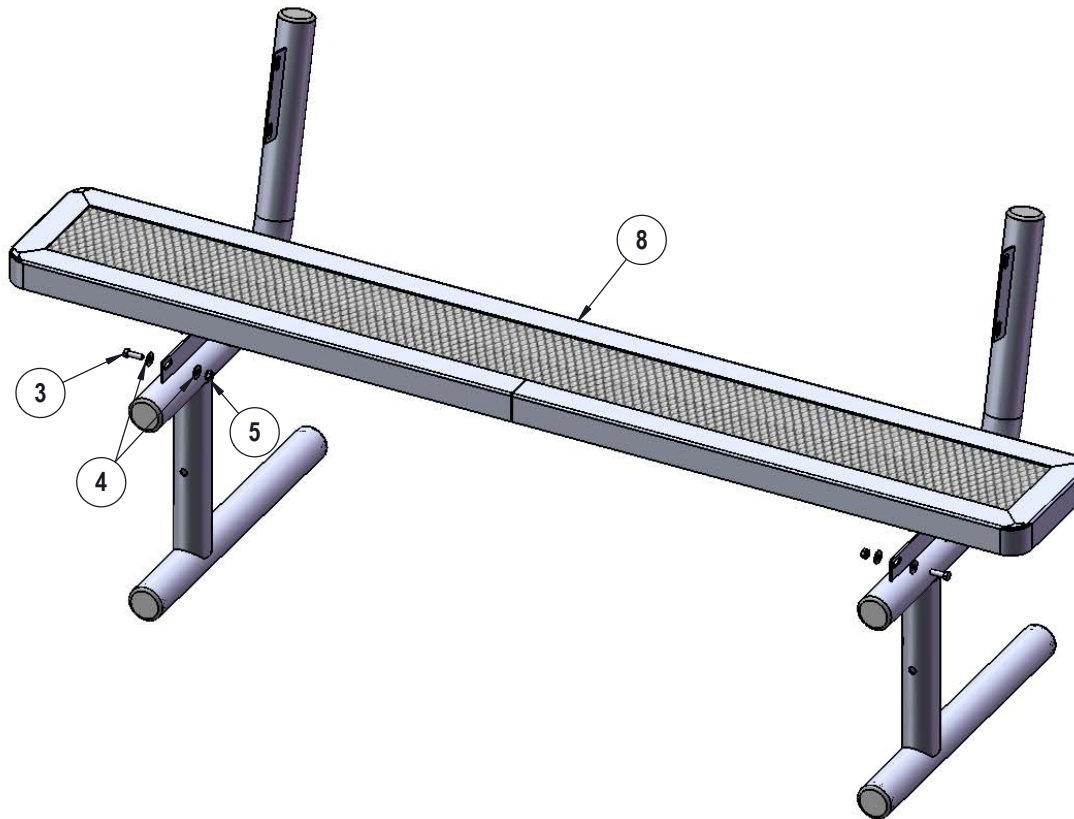
Dimensions: 6' bench portable with back. Seats and back are 10" wide x 72" long. Seat height is 18-3/8", seat back height is 34-1/4". Total depth of seat with back is 22-3/8".

COMPONENTS



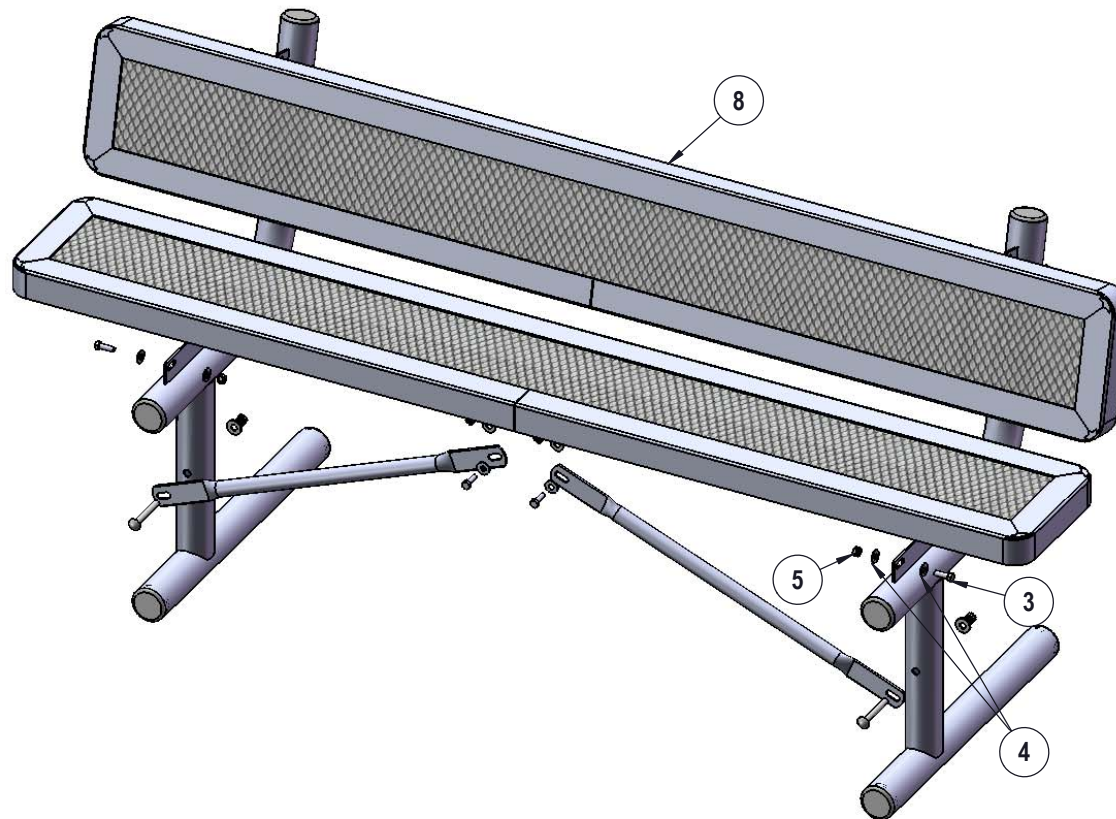
| ITEM NO. | PartNo | DESCRIPTION | Qty. |
|----------|--------------|--|------|
| 1 | P-V940P | 940P Vinyl Leg | 2 |
| 2 | 33-06-0058 | 3/8" x 3" Carriage Bolt (SS) | 2 |
| 3 | 33-05-0029 | 5/16" x 1" Machine Bolt (SS) | 10 |
| 4 | 33-02-0007 | 5/16" SS Washer | 20 |
| 5 | 33-03-0012 | 5/16" Kep Nut (SS) | 10 |
| 6 | 33-02-0008 | 3/8" Flat Washer (SS) | 2 |
| 7 | 33-03-0013 | 3/8" Kep Nut (SS) | 2 |
| 8 | RC72-S | 6' long x 10" wide regal expanded seat | 2 |
| 9 | P-01-04-0129 | 26 3/4" Brace | 2 |

STEP 1



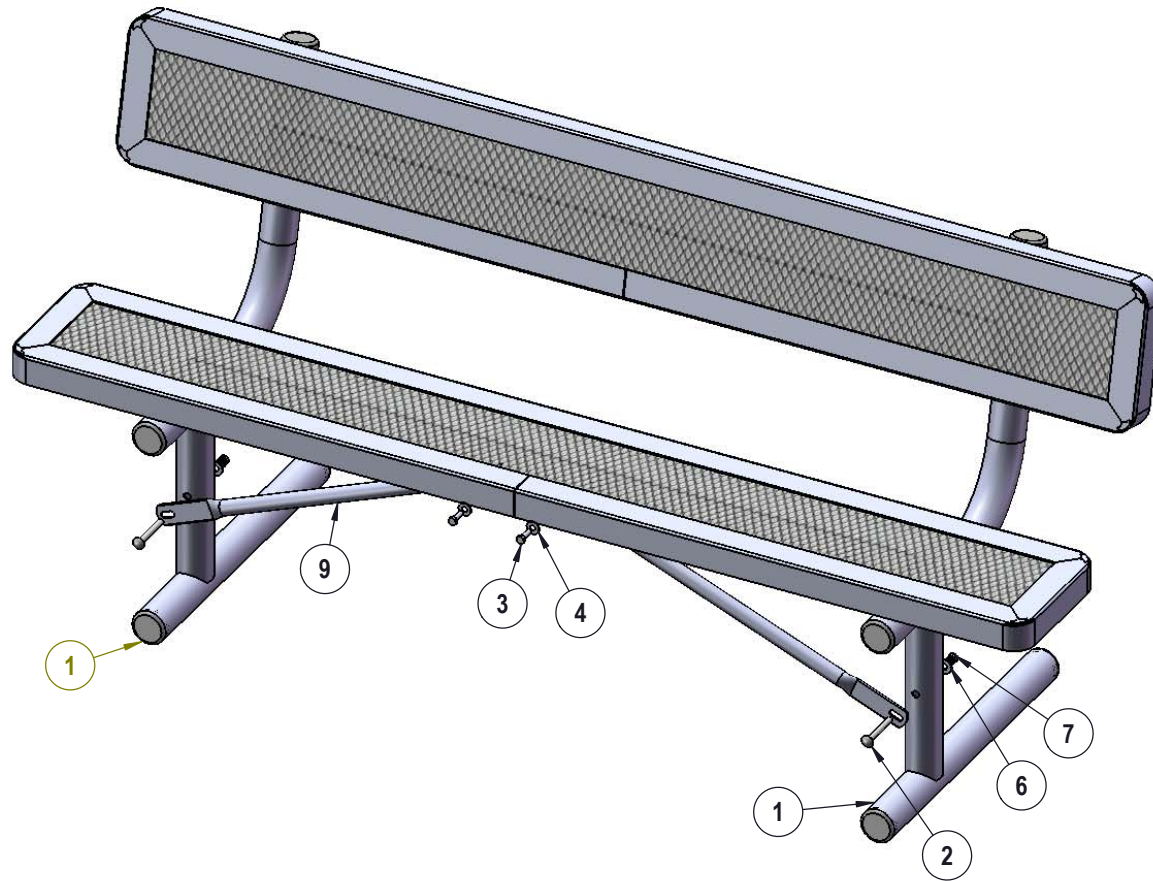
Attach the 6' Expanded Seat to the 940 legs using specified hardware.

STEP 2



Repeat Step 1 for the back.

STEP 3



Attach the 29-1/2" Braces to the 940 legs as shown using specified hardware.

OVERALL DIMENSIONS

