

#### Material Specifications and Notes:

1. All structural steel tubing shall be ASTM A-500 Grade B-C
2. All other steel (plates, gussets, etc.) shall be ASTM A-36.
3. All welding is to be done in accordance with the latest AWS standards.
4. Standard bolts to be ASTM A-325 & threaded rod to be ASTM B-7 unless otherwise noted.
5. All fabricated steel & structural tubes are blasted to a near-white condition prior to application of primer and top coat.
  - Primer: Zinc Rich
  - Top coat: TGIC powder coating
6. Metal roofing shall be pre-cut 24ga. x 1 1/4" dp x 36" wide, Fy =50ksi steel panels.

#### Erection Notes:

All members must be properly braced until the complete structural system has been constructed. Bracing material and method is the responsibility of the G.C.

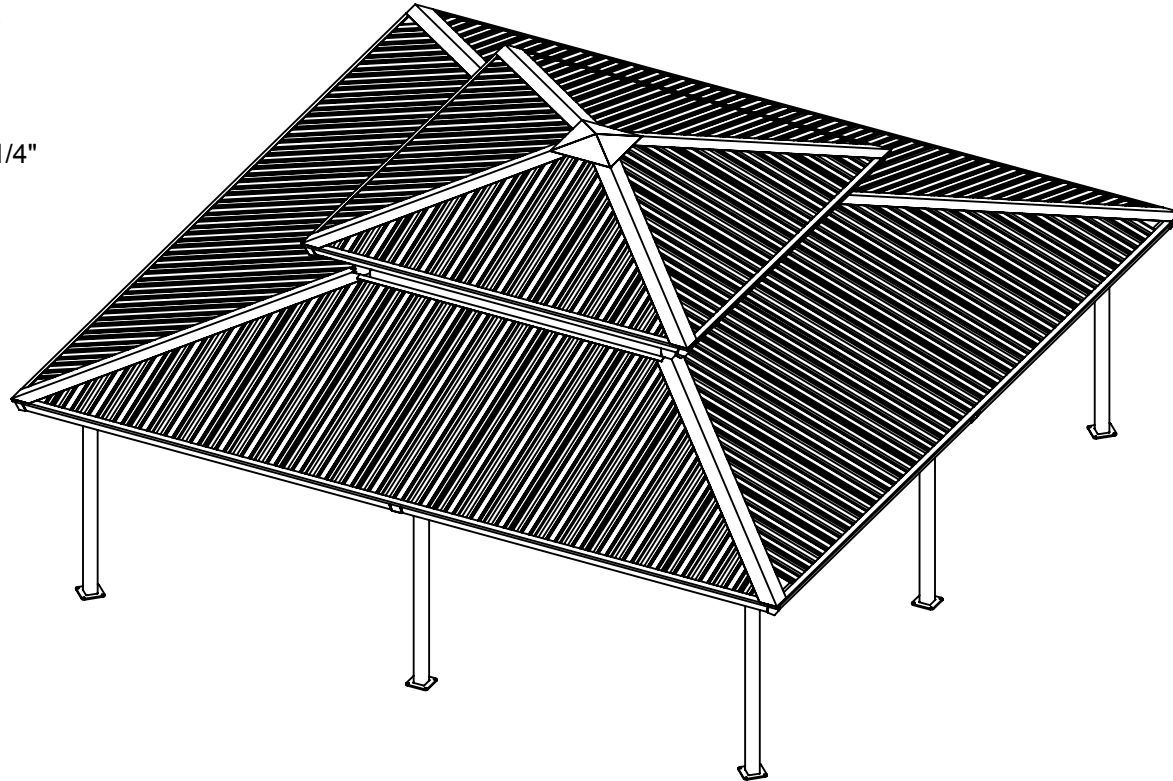
This building has been designed as a free standing, open structure. If walls or other modifications are to be made, the structure must be re-engineered prior to these modifications.

This document contains proprietary information and is not to be reproduced without the written permission from SUPERIOR RECREATIONAL PRODUCTS and/or is not to be used in any manner detrimental to the interest of SUPERIOR RECREATIONAL PRODUCTS.

**N.I.C. = NOT IN CONTRACT**  
**G.C. = GENERAL CONTRACTOR**

#### Table of Contents

Page #	Description
1	General Specs and Notes
2	Primary Structural Views
3	Ground Plan Layout
4	Footer/Anchor Illustration




#### Model #: 4S30-AS-2T

30'-0" x 30'-0" Square Double Tier Shelter  
7'-6" Eave Height  
4:12 Pitch

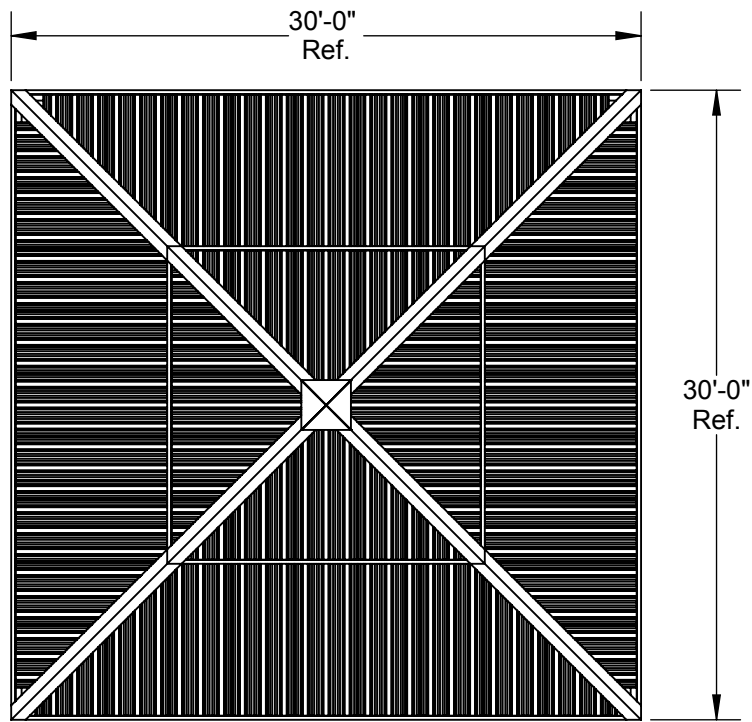
## Preliminary Drawings

All quotation drawings are preliminary only, not to be used for installation of any kind.

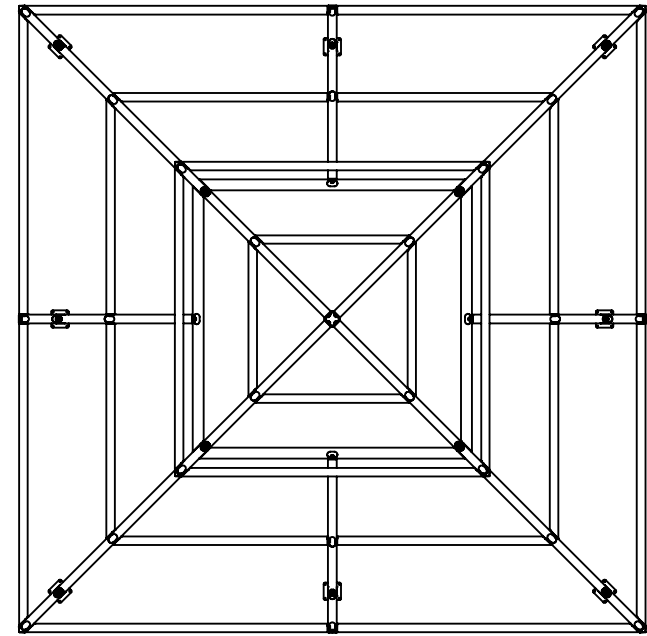
 <b>SUPERIOR</b> RECREATIONAL PRODUCTS	Rev Date & Description:		<b>Superior Recreational Products</b>		Description: <b>General Specs and Notes</b>						
	Rev Date & Description:				Material:						
	Date: 10/5/2015	Drawn By: DEB	THIS DOCUMENT AND THE INFORMATION CONTAINED HEREIN IS THE EXCLUSIVE PROPERTY OF SUPERIOR RECREATIONAL PRODUCTS AND HAS BEEN PROVIDED TO YOU IN CONFIDENCE. THIS DOCUMENT AND THE INFORMATION HEREIN MAY NOT BE DISCLOSED OR PROVIDED TO ANY THIRD PARTY OR USED, COPIED, PHOTOGRAPHED OR OTHERWISE REPRODUCED WITHOUT PRIOR EXPRESS WRITTEN PERMISSION OF SUPERIOR RECREATIONAL PRODUCTS.			Weight:		Size: A	Units: Inch	Tol: ±.0625 Unless Otherwise Specified	Scale: NTS

1050 Columbia Drive, Carrollton GA 30117  
Toll Free: 800-327-8774 Local: 770-832-6660

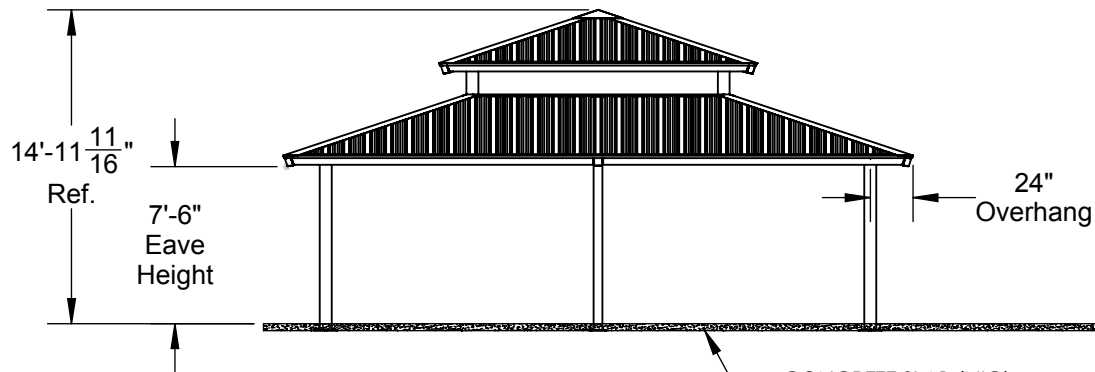
Rev: **xx**  
Drawing Number:  
4S30-AS-2T



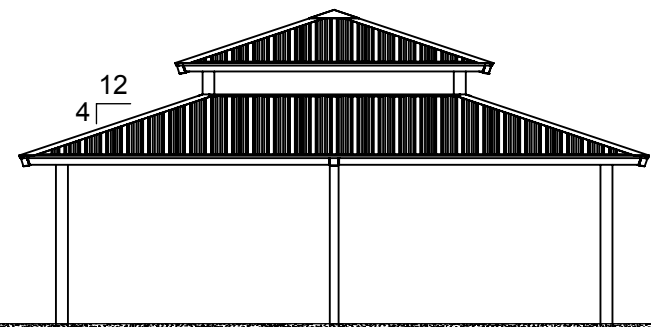
**Top View**



**Top View (Frame Only)**



**Front View**



**Side View**

## Preliminary Drawings

All quotation drawings are preliminary only, not to be used for installation of any kind.



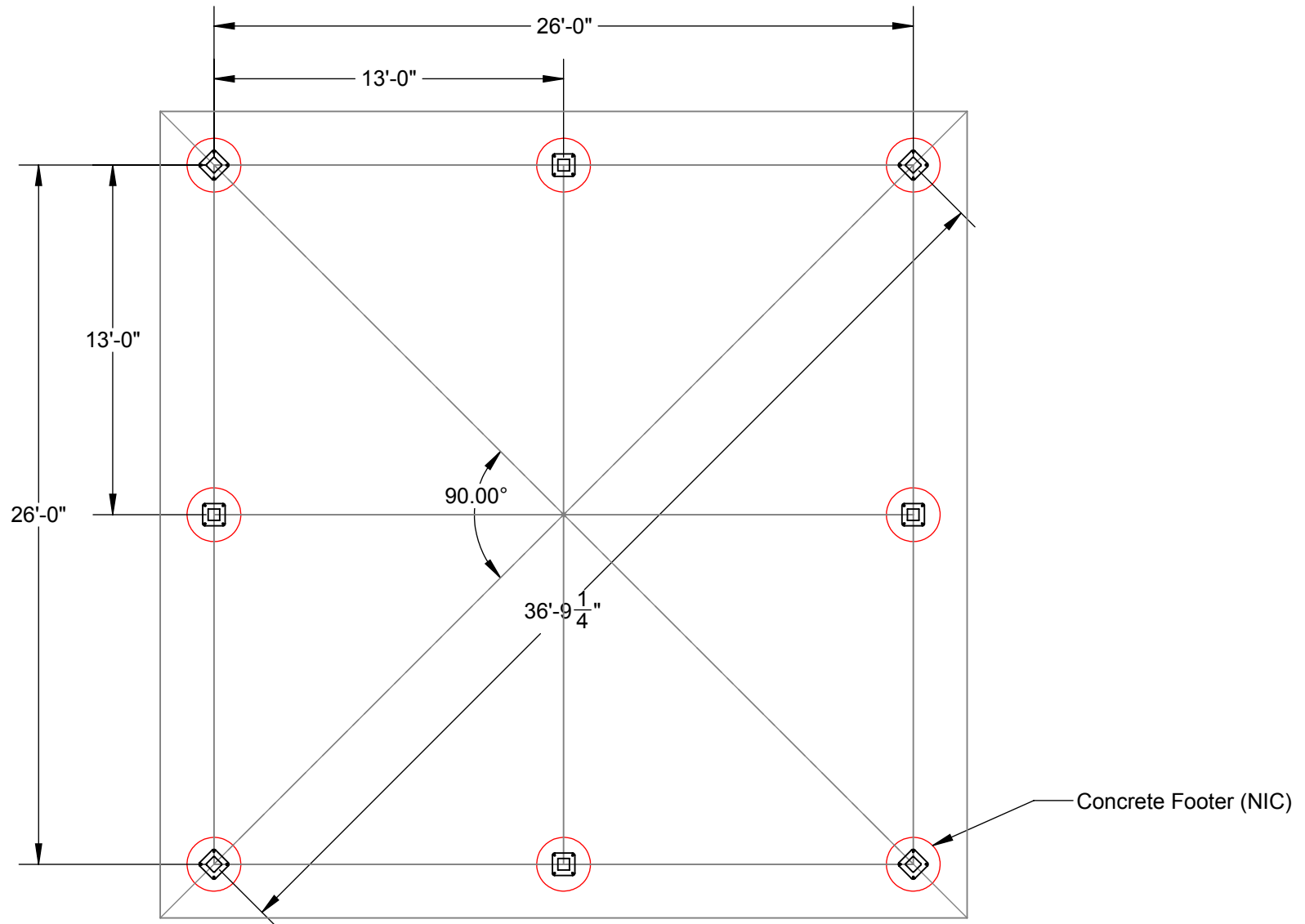
Rev Date & Description:	
Rev Date & Description:	
Date:	10/5/2015
Drawn By:	DEB

### Superior Recreational Products

THIS DOCUMENT AND THE INFORMATION CONTAINED HEREIN IS THE EXCLUSIVE PROPERTY OF SUPERIOR RECREATIONAL PRODUCTS AND HAS BEEN PROVIDED TO YOU IN CONFIDENCE. THIS DOCUMENT AND THE INFORMATION HEREIN MAY NOT BE DISCLOSED OR PROVIDED TO ANY THIRD PARTY OR USED, COPIED, PHOTOGRAPHED OR OTHERWISE REPRODUCED WITHOUT PRIOR EXPRESS WRITTEN PERMISSION OF SUPERIOR RECREATIONAL PRODUCTS.


1050 Columbia Drive, Carrollton GA 30117  
Toll Free: 800-327-8774 Local: 770-832-6660

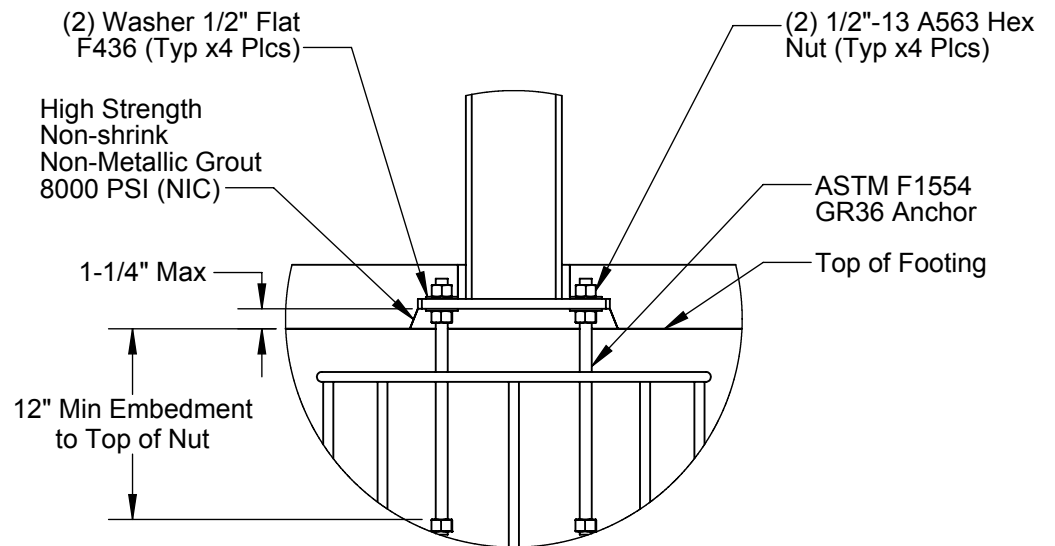
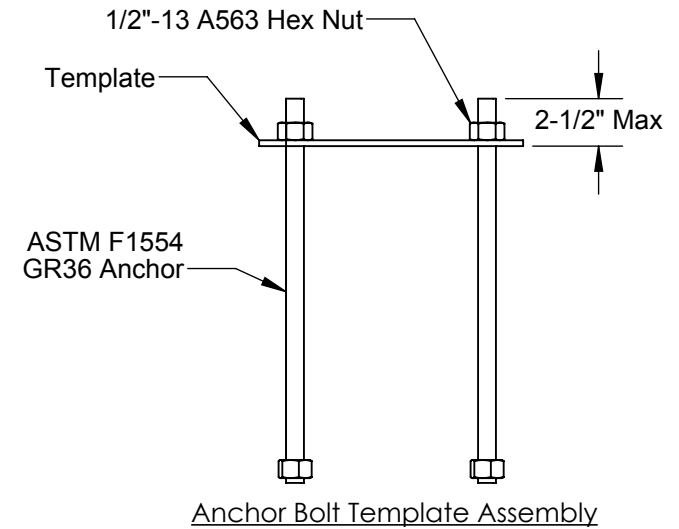
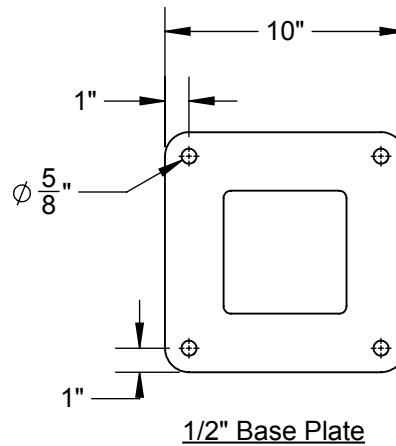
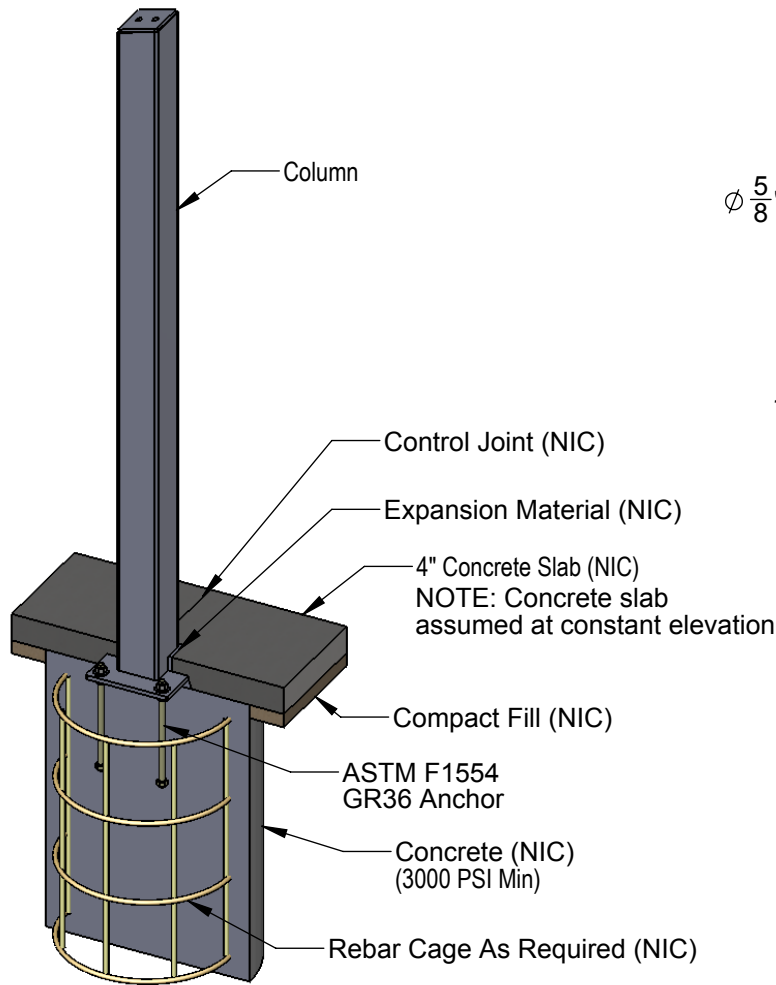
Description:					
Primary Structural Views					
Material:			Rev: <b>xx</b>	Drawing Number: 4S30-AS-2T	
Weight:	Size: <b>A</b>	Units: <b>Inch</b>	Tol: $\pm .0625$ Unless Otherwise Specified	Scale: <b>NTS</b>	Sheet: <b>2 of 4</b>



## Preliminary Drawings

All quotation drawings are preliminary only, not to be used for installation of any kind.

 <div>SUPERIOR RECREATIONAL PRODUCTS</div>	Rev Date & Description:		<b>Superior Recreational Products</b>			Description:  <b>Ground Plan Layout</b>						
	Rev Date & Description:					THIS DOCUMENT AND THE INFORMATION CONTAINED HEREIN IS THE EXCLUSIVE PROPERTY OF SUPERIOR RECREATIONAL PRODUCTS AND HAS BEEN PROVIDED TO YOU IN CONFIDENCE. THIS DOCUMENT AND THE INFORMATION HEREIN MAY NOT BE DISCLOSED OR PROVIDED TO ANY THIRD PARTY OR USED, COPIED, PHOTOGRAPHED OR OTHERWISE REPRODUCED WITHOUT PRIOR EXPRESS WRITTEN PERMISSION OF SUPERIOR RECREATIONAL PRODUCTS.						
	Date:	Drawn By:	<b>1050 Columbia Drive, Carrollton GA 30117 Toll Free: 800-327-8774 Local: 770-832-6660</b>			Material:		Rev:	Drawing Number:			
	10/5/2015	DEB						xx	4S30-AS-2T			
							Weight:	Size:	Units:	Tol:	Scale:	Sheet:
								A	Inch	±.0625 Unless Otherwise Specified	NTS	3 of 4



#### DESIGN NOTE:

All foundation design information should be considered as preliminary only. A local soils engineer shall be retained to design the foundation according to local conditions and codes. Final design of the footing/foundation is the responsibility of the general contractor/owner.

## Preliminary Drawings

All quotation drawings are preliminary only, not to be used for installation of any kind.



Rev Date & Description:

Rev Date & Description:

Date:

10/5/2015

Drawn By:

DEB

## Superior Recreational Products

THIS DOCUMENT AND THE INFORMATION CONTAINED HEREIN IS THE EXCLUSIVE PROPERTY OF SUPERIOR RECREATIONAL PRODUCTS AND HAS BEEN PROVIDED TO YOU IN CONFIDENCE. THIS DOCUMENT AND THE INFORMATION HEREIN MAY NOT BE DISCLOSED OR PROVIDED TO ANY THIRD PARTY OR USED, COPIED, PHOTOGRAPHED OR OTHERWISE REPRODUCED WITHOUT PRIOR EXPRESS WRITTEN PERMISSION OF SUPERIOR RECREATIONAL PRODUCTS.

1050 Columbia Drive, Carrollton GA 30117  
Toll Free: 800-327-8774 Local: 770-832-6660

Description:

## Footer/Anchor Illustration

Material:

Rev:

xx

Drawing Number:

4S30-AS-2T

Weight:

Size:

A

Units:

Inch

Tol:  $\pm .0625$   
Unless Otherwise Specified

Scale:

NTS

Sheet:

4 of 4