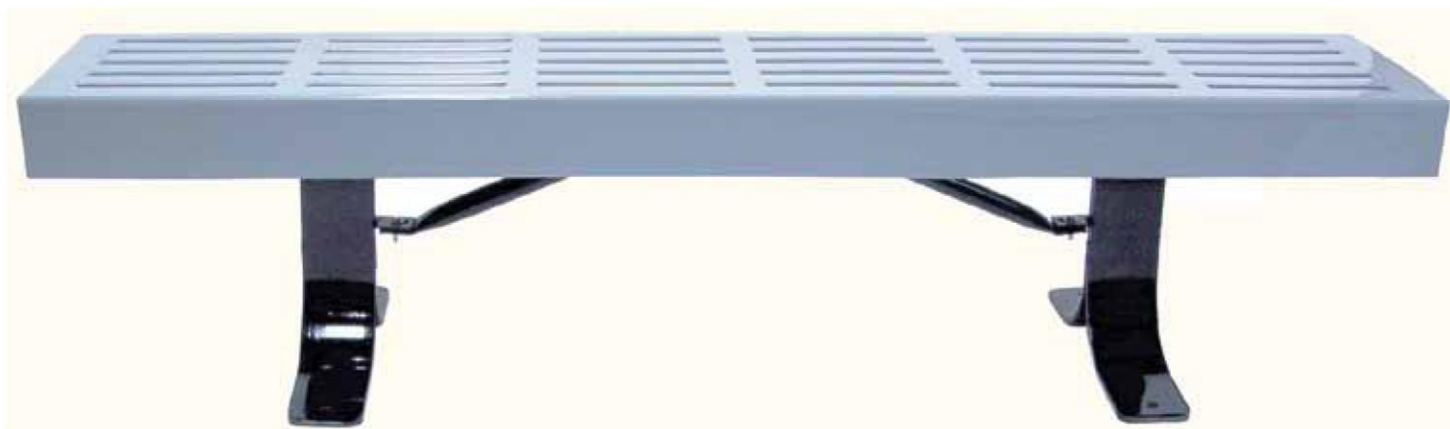


## SPEC SHEET: B6SP

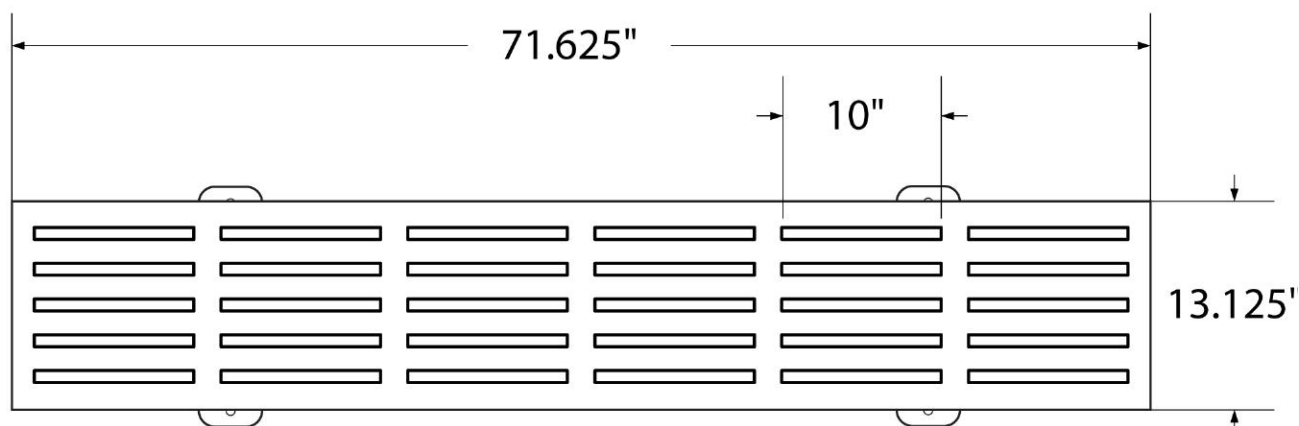
### 6' SLATTED BENCH WITHOUT BACK *PORTABLE*

**Wt. 100 lbs**

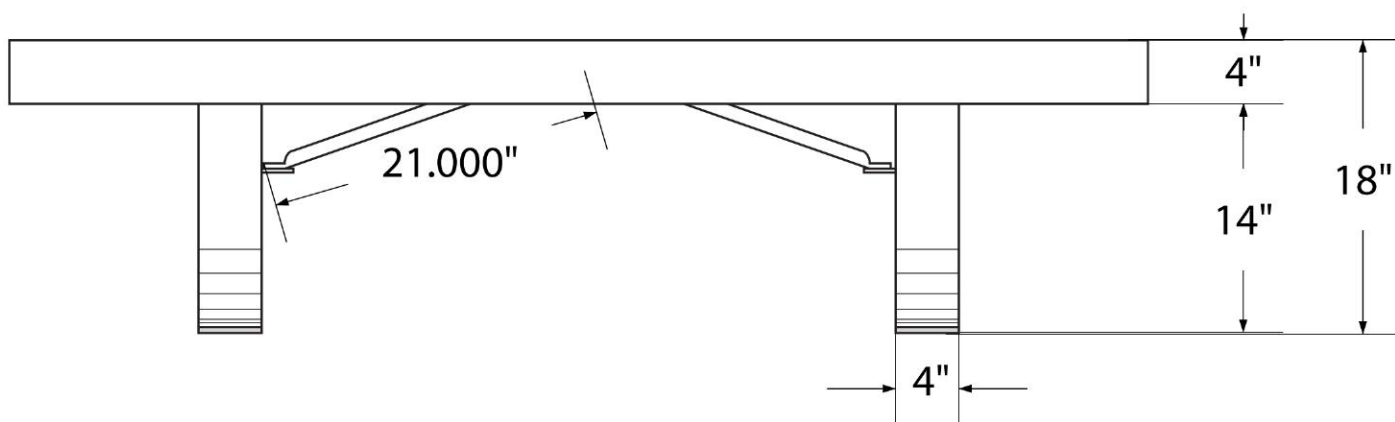
*photo*



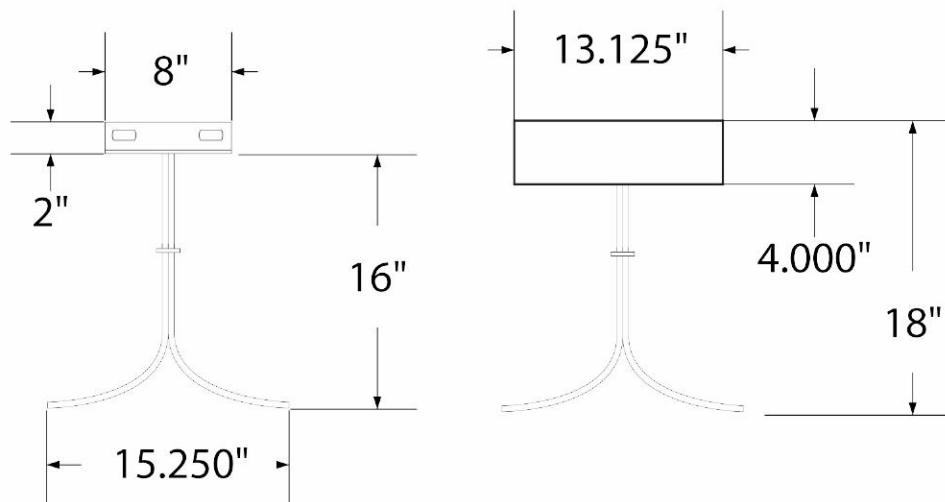
*top view*



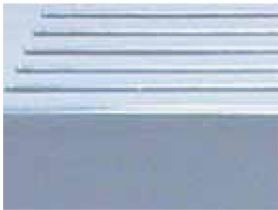
*front*



**side view**



**product finish**



The functional surfaces of our furniture are covered in a copolymer-based thermoplastic powder coating. Thermoplastic is environmentally safe, the coating will never fade, crack, peel, warp, or discolor for the life of the product. Thermoplastic is applied at a thickness of 25-30 mils.



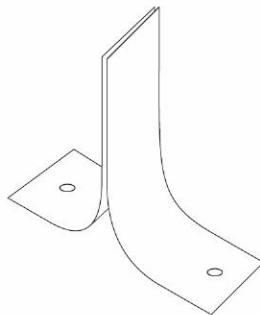
Legs and understructure parts are made from galvanized steel and are finished with black polyester powder coating.

**mounting types**

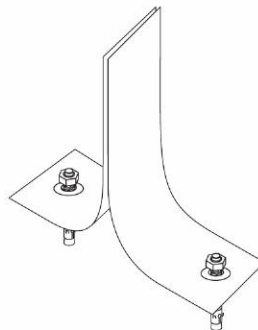
P = Portable : no mount

SM = Surface Mount:  
concrete anchors  
through holes on legs

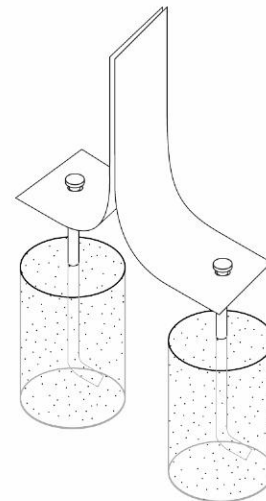
IG= In-Ground:  
J-rods set in concete  
through discs welded  
to legs



PORTABLE



SURFACE MOUNT



IN-GROUND