

CANTILEVER/ CAR PARKING SHADE

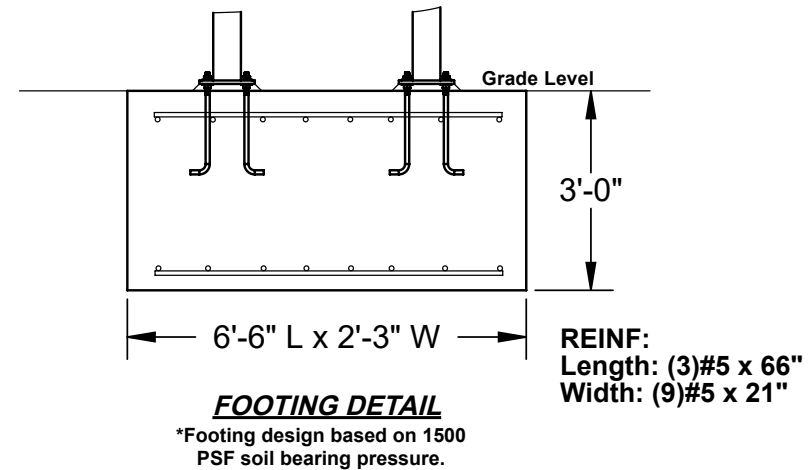
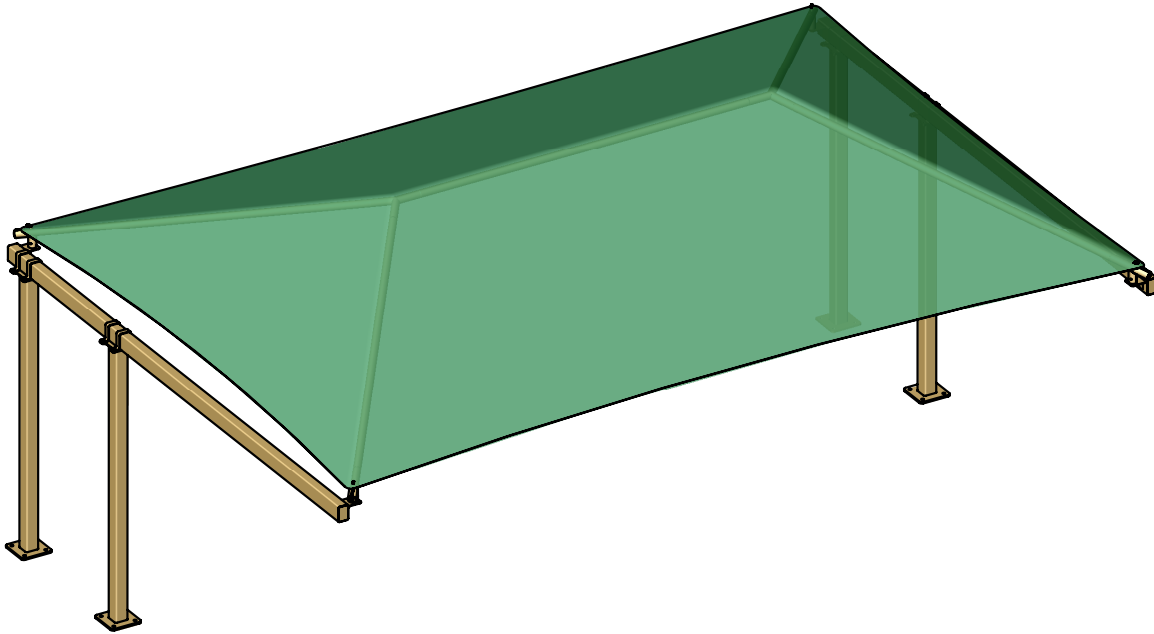
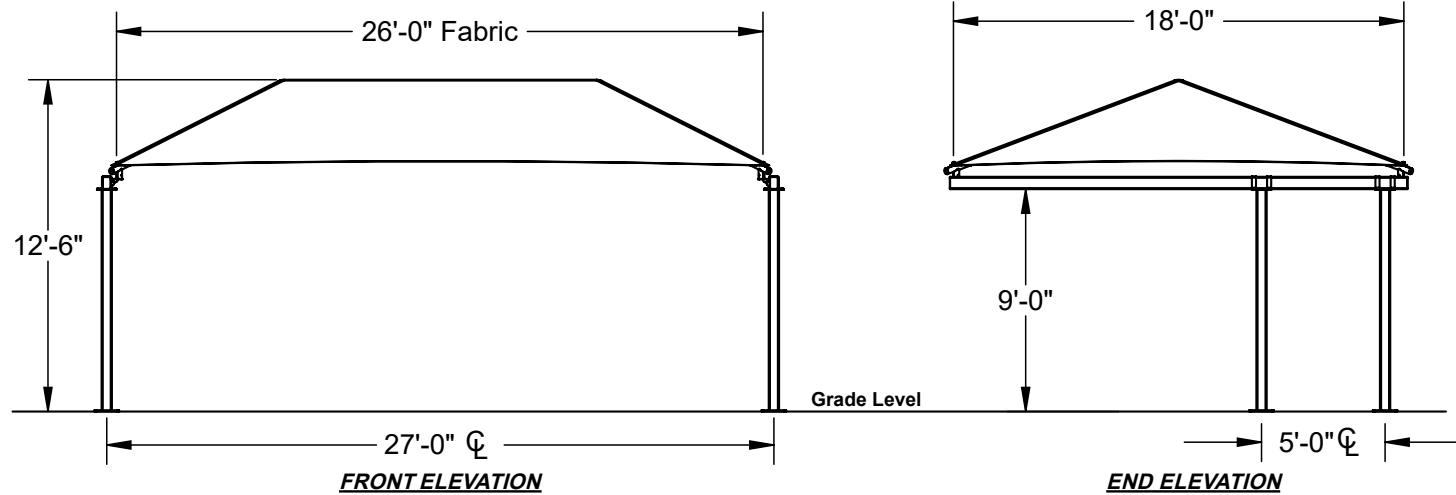
**27' x 18' x 9'**

MODEL #:

RC271809SG (With Glide Elbows)

RC271809SN (Without Glide Elbows)

| REF.# | PART DESCRIPTION                  | QTY. |
|-------|-----------------------------------|------|
| 1     | 5" Sq. Surface Mount Column       | 4    |
| 2     | 4" x 6" Beam With Platform Caps   | 2    |
| 3     | Ø2 7/8" Angled Elbow              | 4    |
| 4     | Ø2 7/8" Hip Rafter w/ Swaged End  | 4    |
| 5     | Ø2 7/8" Ridge Pole w/ Swaged Ends | 1    |
| 6     | Ø2 7/8" Rectangle "Y" Connection  | 2    |
| 7     | Fabric Cover With Cable Insert    | 1    |
| 8     | Frame Hardware Kit                | 1    |



CANTILEVER/ CAR PARKING SHADE

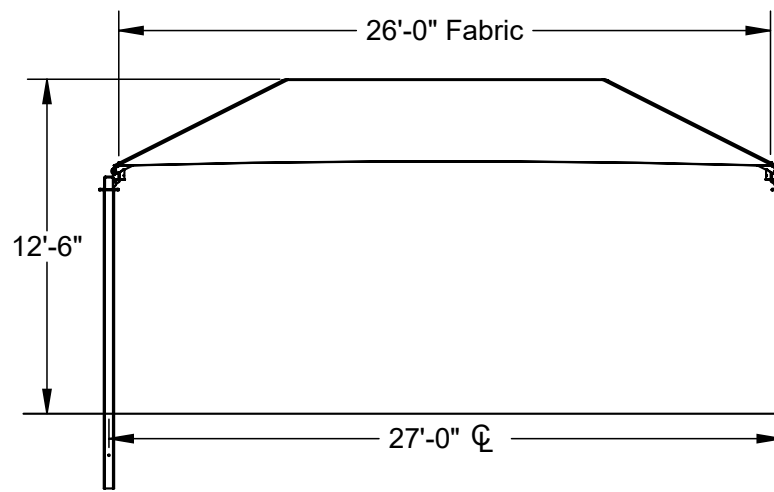
**27' x 18' x 9'**

MODEL #:

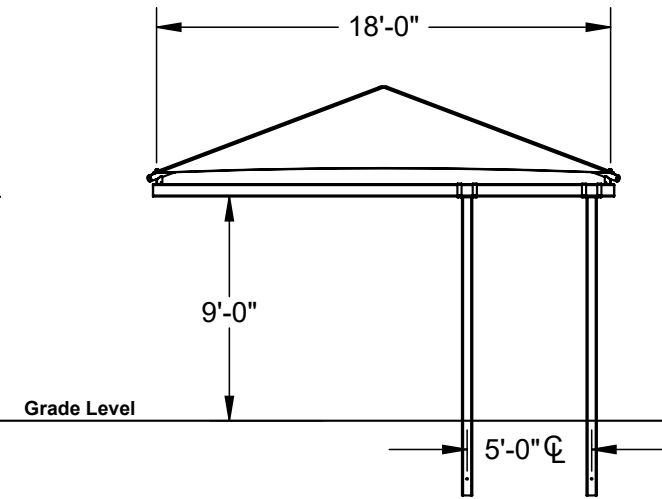
RC271809IG-105 (With Glide Elbows)

RC271809IN-105 (Without Glide Elbows)

| REF.# | PART DESCRIPTION                | QTY. |
|-------|---------------------------------|------|
| 1     | 5" Sq. Surface Mount Column     | 4    |
| 2     | 6" x 6" Beam With Platform Caps | 2    |
| 3     | Ø3.5" Angled Elbow              | 4    |
| 4     | Ø3.5" Hip Rafter w/ Swaged End  | 4    |
| 5     | Ø3.5" Ridge Pole w/ Swaged Ends | 1    |
| 6     | Ø3.5" Rectangle "Y" Connection  | 2    |
| 7     | Fabric Cover With Cable Insert  | 1    |
| 8     | Frame Hardware Kit              | 1    |



**FRONT ELEVATION**



**END ELEVATION**

