

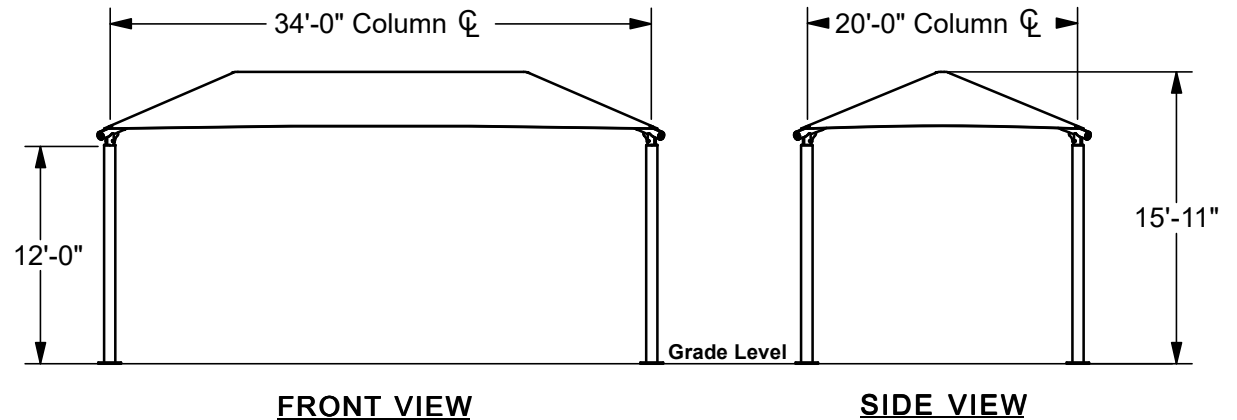
RECTANGLE HIP SHADE

**20' x 34' x 12'**

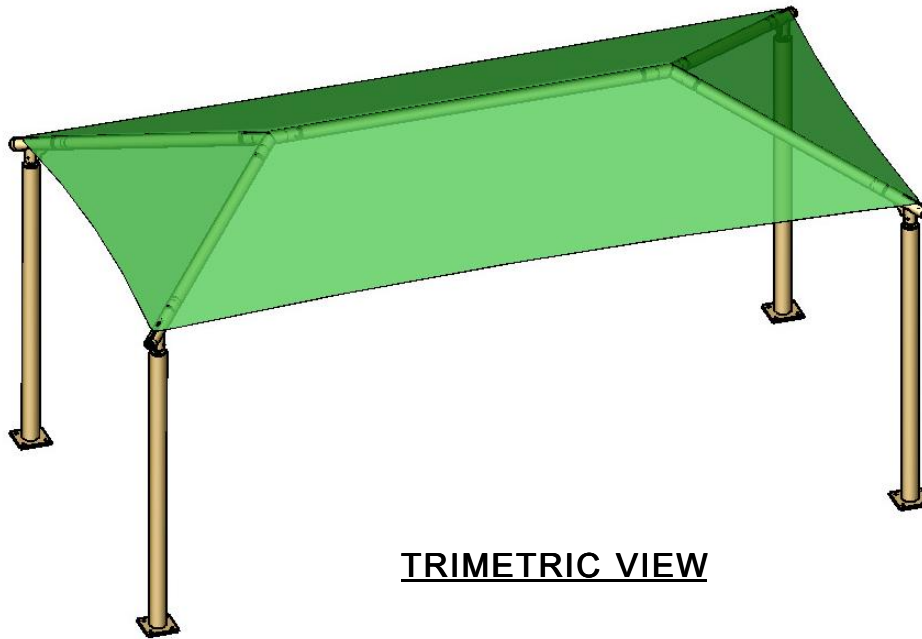
MODEL #:

RD203412SG (With Glide Elbows)

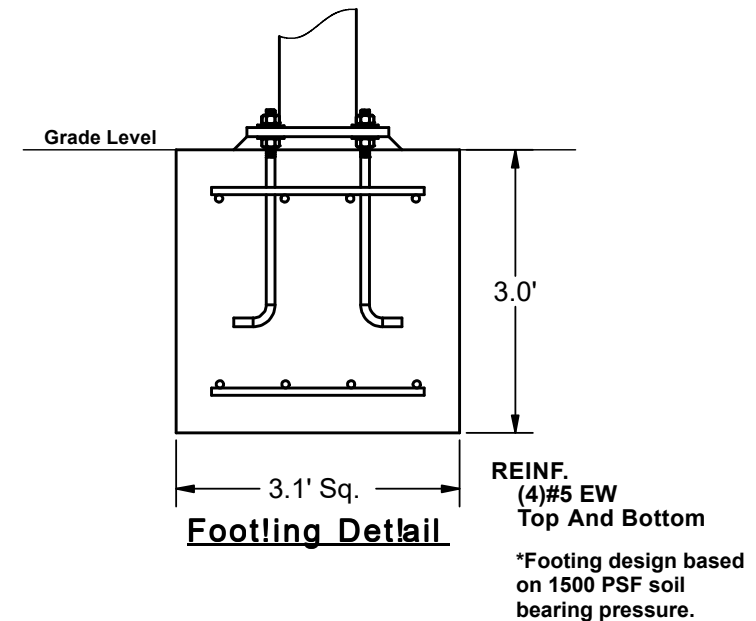
RD203412SN (Without Glide Elbows)



REF.#	PART DESCRIPTION	QTY.
1	Ø6.6"Capped Surface Mount Column	4
2	Angled Elbow	4
3	Ø3.5"Hip Rafter w/ Swaged End	4
4	Ø3.5"Ridge Pole w/ Swaged Ends	1
5	Rectangle "Y" Connection	2
6	Fabric Cover w/ Cable Insert	1
7	Frame Hardware Kit	1



TRIMETRIC VIEW



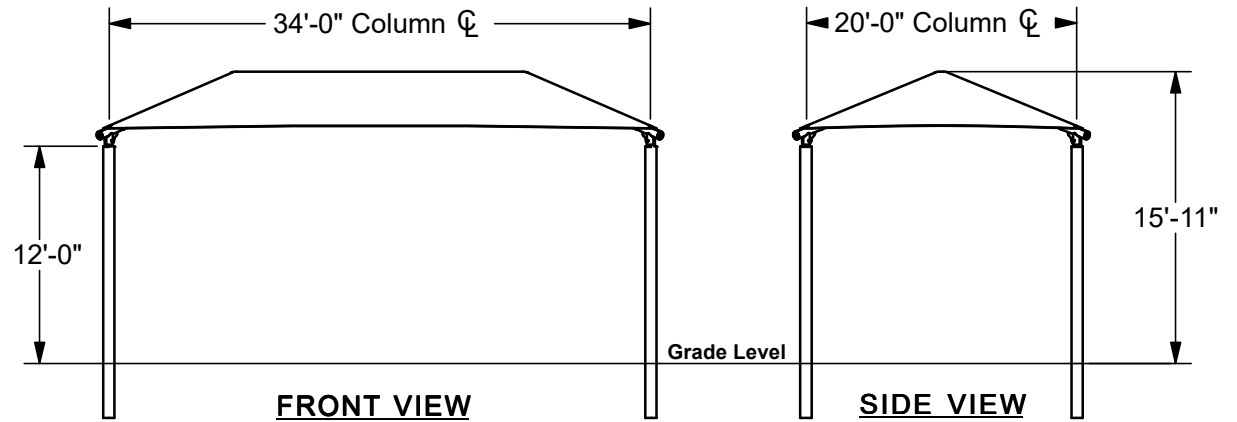
RECTANGLE HIP SHADE

**20' x 34' x 12'**

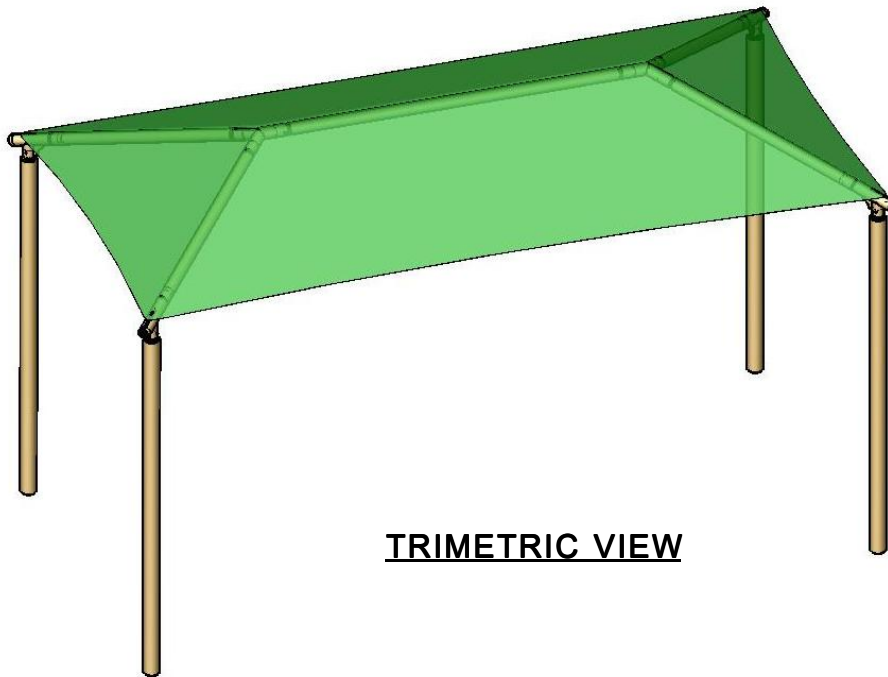
MODEL #:

RD203412IG (With Glide Elbows)

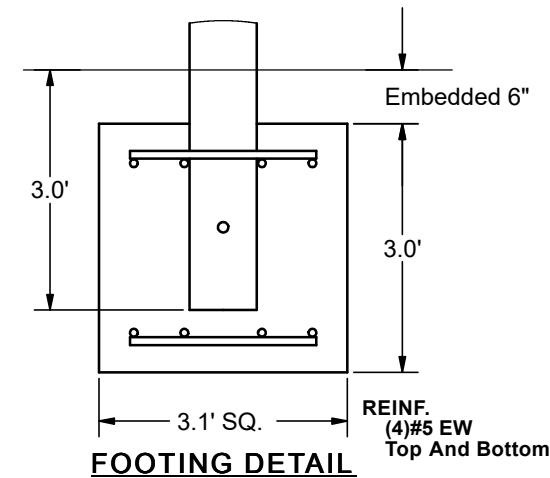
RD203412IN (Without Glide Elbows)



REF.#	PART DESCRIPTION	QTY.
1	Ø6.6" Capped Embedded Column	4
2	Angled Elbow	4
3	Ø3.5" Hip Rafter w/ Swaged End	4
4	Ø3.5" Ridge Pole w/ Swaged Ends	1
5	Rectangle "Y" Connection	2
6	Fabric Cover w/ Cable Insert	1
7	Frame Hardware Kit	1



TRIMETRIC VIEW



\*Footing design based on 1500 PSF soil bearing pressure.