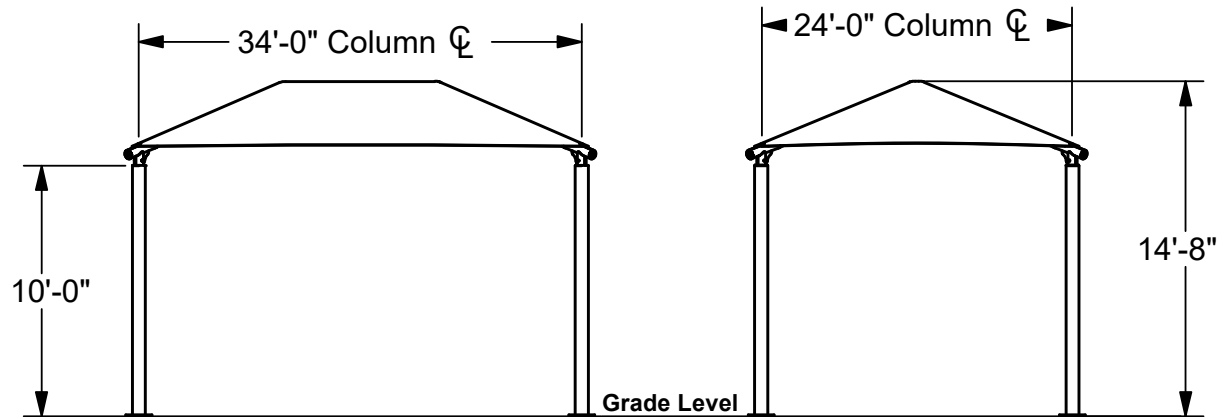


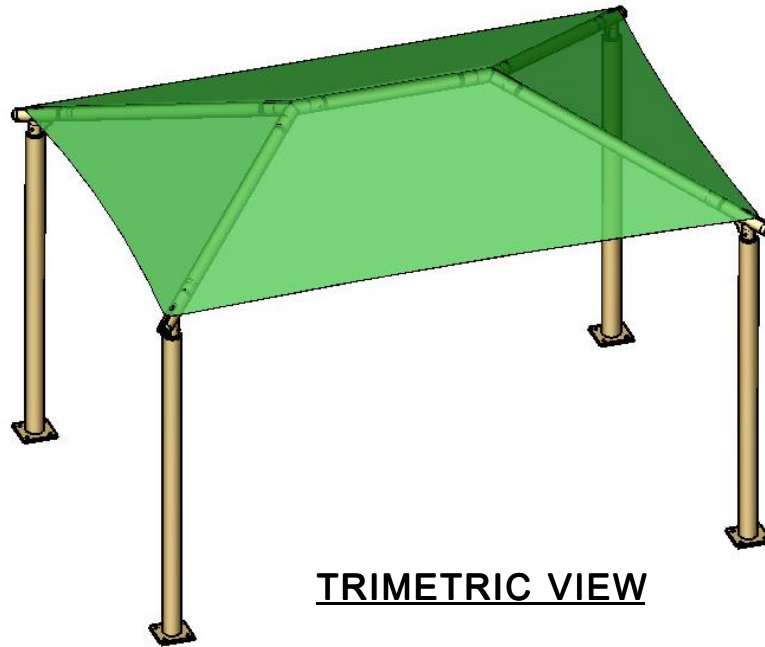
# RECTANGLE HIP SHADE

## 24' x 34' x 10'

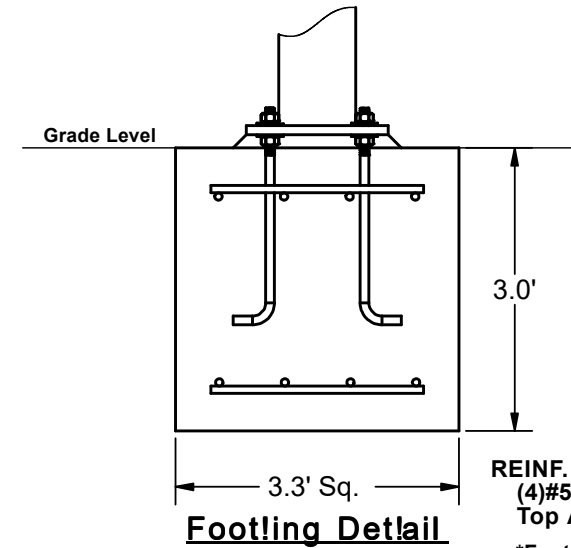
MODEL #:  
RD243410SG (With Glide Elbows)  
RD243410SN (Without Glide Elbows)



REF.#	PART DESCRIPTION	QTY.
1	Ø6.6" Capped Surface Mount Column	4
2	Angled Elbow	4
3	Ø2.88" Hip Rafter w/ Swaged End	4
4	Ø2.88" Ridge Pole w/ Swaged Ends	1
5	Rectangle "Y" Connection	2
6	Fabric Cover w/ Cable Insert	1
7	Frame Hardware Kit	1



TRIMETRIC VIEW



REINF.  
(4)#5 EW  
Top And Bottom  
\*Footing design based  
on 1500 PSF soil  
bearing pressure.

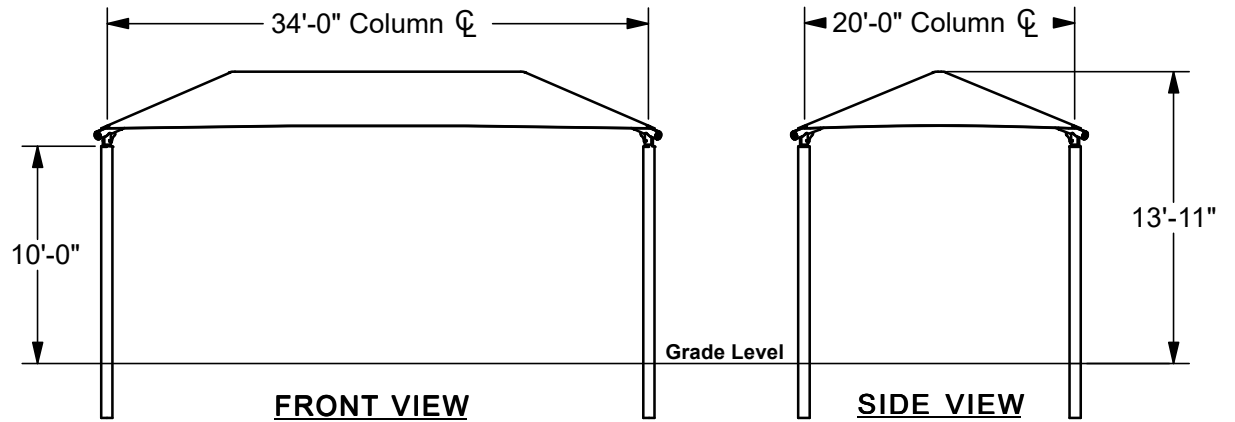
RECTANGLE HIP SHADE

**20' x 34' x 10'**

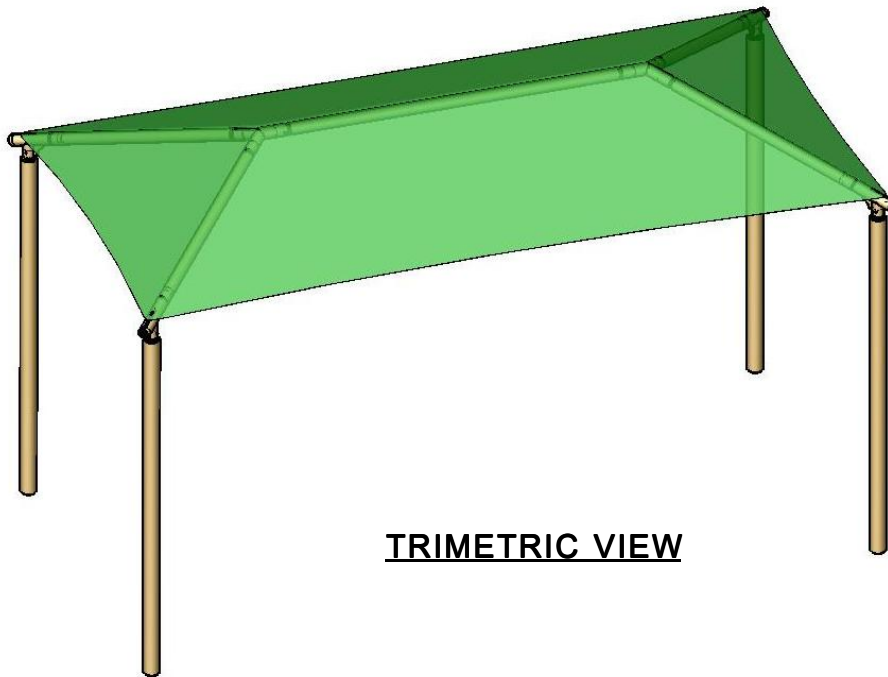
MODEL #:

RD203410IG (With Glide Elbows)

RD203410IN (Without Glide Elbows)



REF.#	PART DESCRIPTION	QTY.
1	Ø5.5" Capped Embedded Column	4
2	Angled Elbow	4
3	Ø3.5" Hip Rafter w/ Swaged End	4
4	Ø3.5" Ridge Pole w/ Swaged Ends	1
5	Rectangle "Y" Connection	2
6	Fabric Cover w/ Cable Insert	1
7	Frame Hardware Kit	1



TRIMETRIC VIEW

