

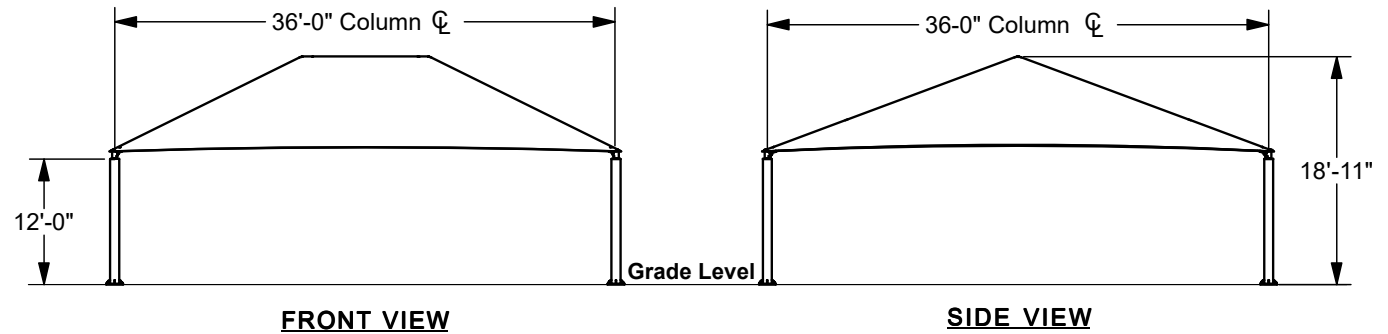
SQUARE HIP SHADE

36' x 36' x 12'

MODEL #:

SD363612SG (With Glide Elbows)

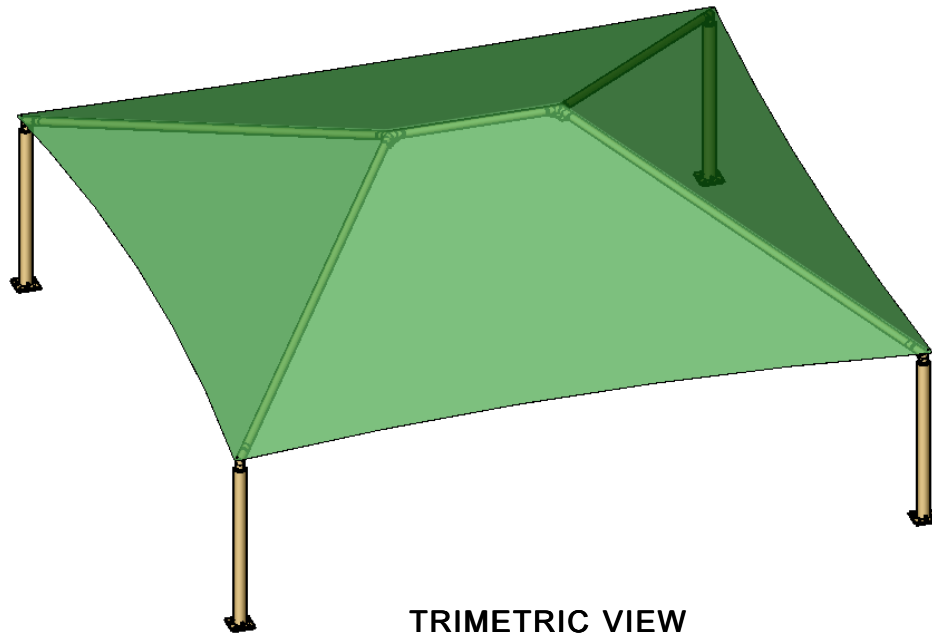
SD363612SN (Without Glide Elbows)



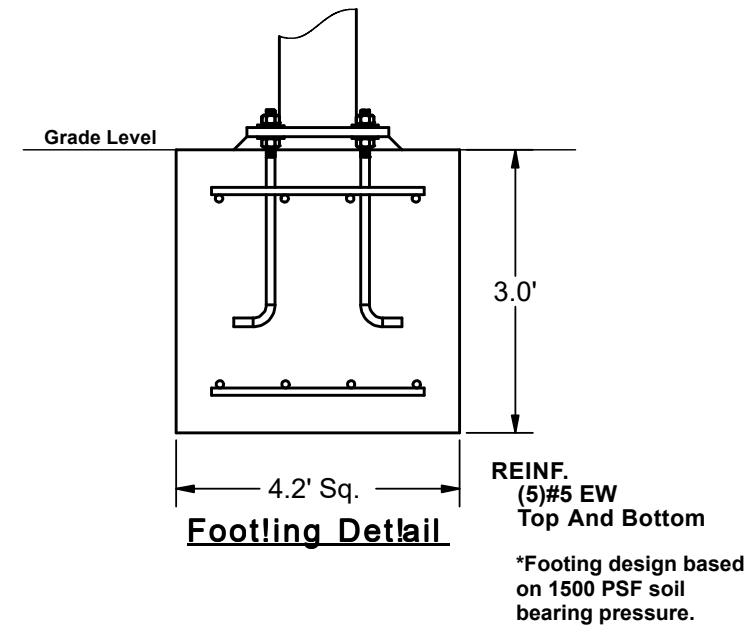
FRONT VIEW

SIDE VIEW

REF.#	PART DESCRIPTION	QTY.
1	Ø8.6" Capped Surface Mount Column	4
2	Angled Elbow	4
3	Ø5.0" Hip Rafter w/ Swaged End	4
4	Ø5.0" Ridge Pole w/ Swaged Ends	1
5	Square "Y" Connection	2
6	Fabric Cover w/ Cable Insert	1
7	Frame Hardware Kit	1



TRIMETRIC VIEW



REINF.
(5)#5 EW
Top And Bottom

*Footling design based on 1500 PSF soil bearing pressure.

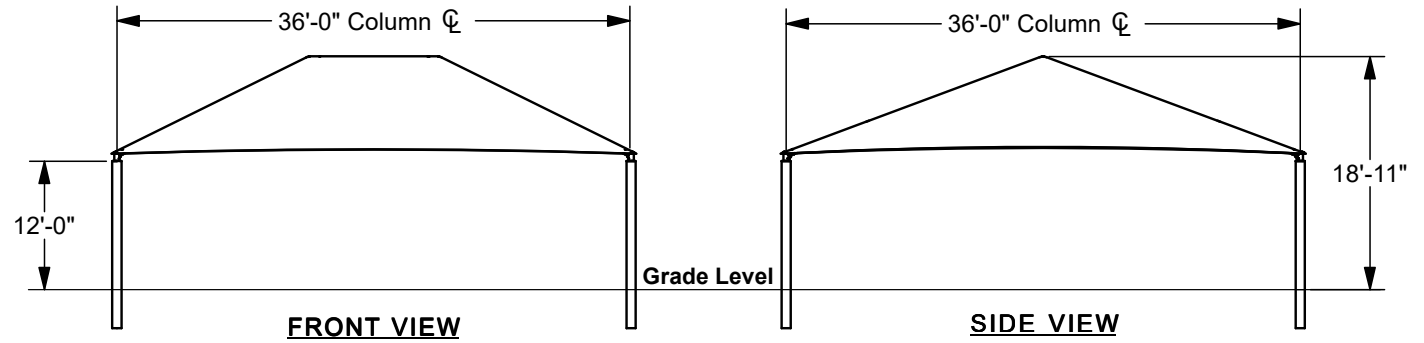
SQUARE HIP SHADE

36' x 36' x 12'

MODEL #:

SD363612IG (With Glide Elbows)

SD363612IN (Without Glide Elbows)



REF.#	PART DESCRIPTION	QTY.
1	Ø8.6"Capped Embedded Column	4
2	Angled Elbow	4
3	Ø5.0"Hip Rafter w/ Swaged End	4
4	Ø5.0"Ridge Pole w/ Swaged Ends	1
5	Square "Y" Connection	2
6	Fabric Cover w/ Cable Insert	1
7	Frame Hardware Kit	1

