

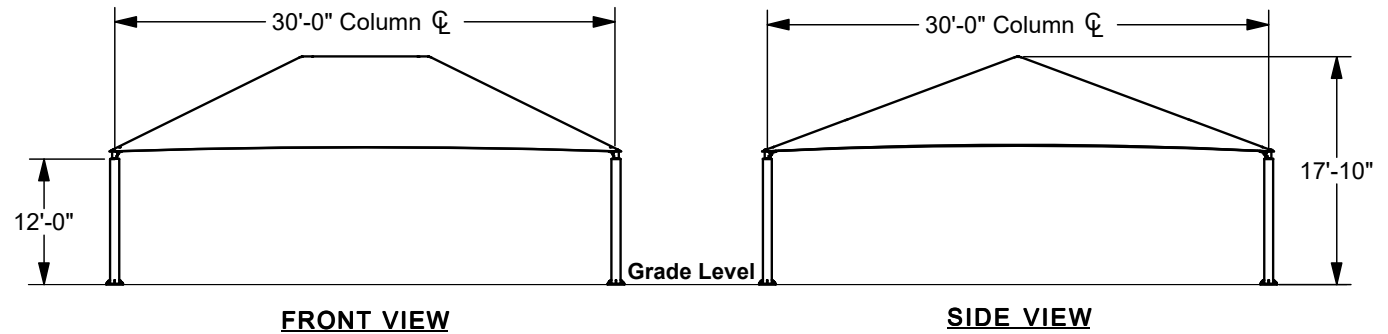
SQUARE HIP SHADE

30' x 30' x 12'

MODEL #:

SD303012SG (With Glide Elbows)

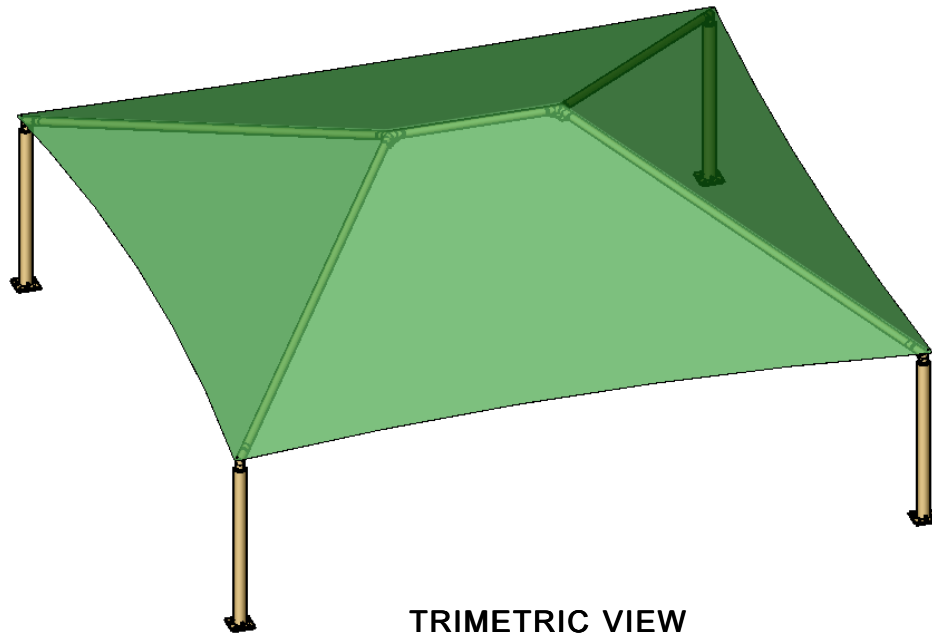
SD303012SN (Without Glide Elbows)



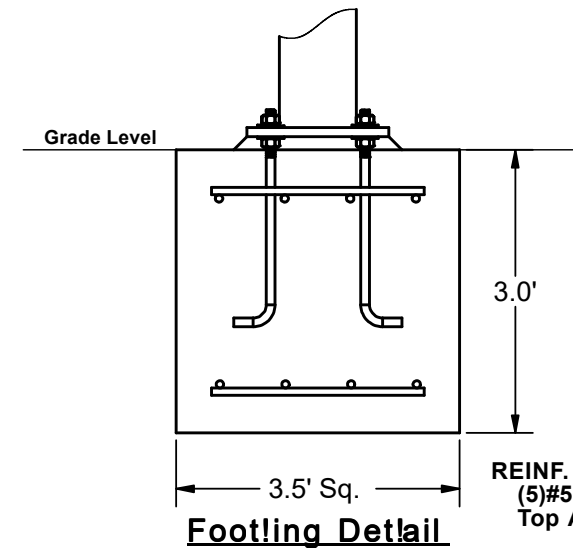
FRONT VIEW

SIDE VIEW

REF.#	PART DESCRIPTION	QTY.
1	Ø8.6"Capped Surface Mount Column	4
2	Angled Elbow	4
3	Ø3.5"Hip Rafter w/ Swaged End	4
4	Ø3.5"Ridge Pole w/ Swaged Ends	1
5	Square "Y" Connection	2
6	Fabric Cover w/ Cable Insert	1
7	Frame Hardware Kit	1



TRIMETRIC VIEW



REINF.
(5)#5 EW
Top And Bottom

*Footing design based
on 1500 PSF soil
bearing pressure.

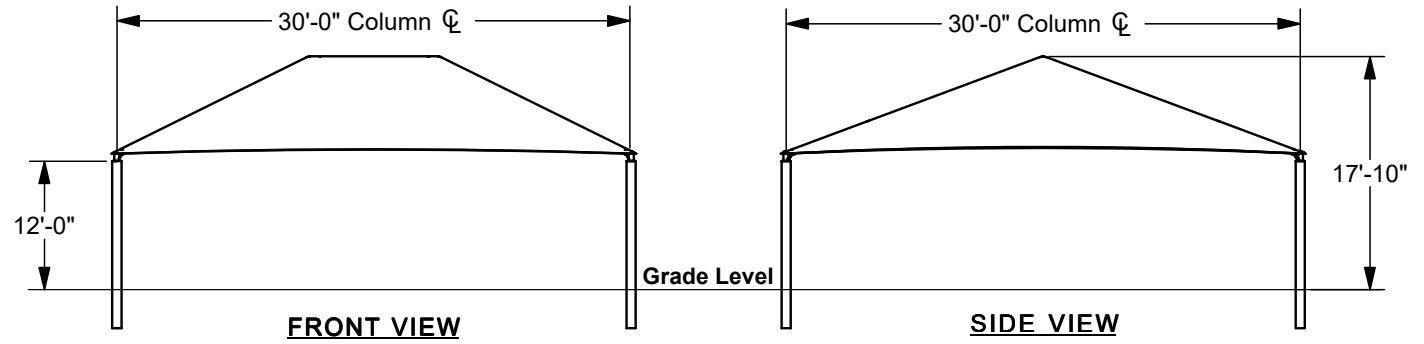
SQUARE HIP SHADE

30' x 30' x 12'

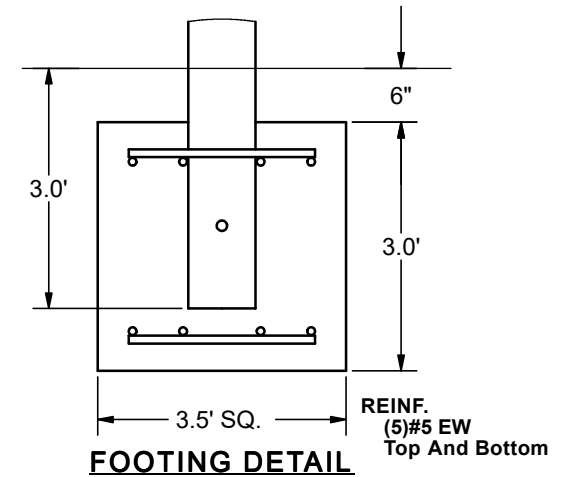
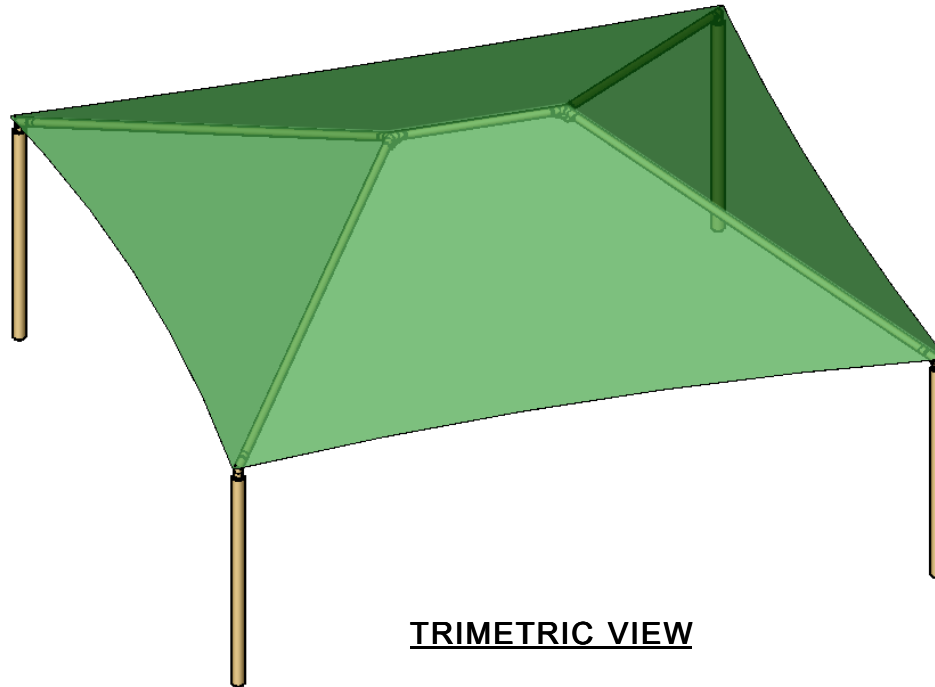
MODEL #:

SD303012IG (With Glide Elbows)

SD303012IN (Without Glide Elbows)



REF.#	PART DESCRIPTION	QTY.
1	Ø8.6"Capped Embedded Column	4
2	Angled Elbow	4
3	Ø3.5"Hip Rafter w/ Swaged End	4
4	Ø3.5"Ridge Pole w/ Swaged Ends	1
5	Square "Y" Connection	2
6	Fabric Cover w/ Cable Insert	1
7	Frame Hardware Kit	1



*Footing design based on 1500 PSF soil bearing pressure.