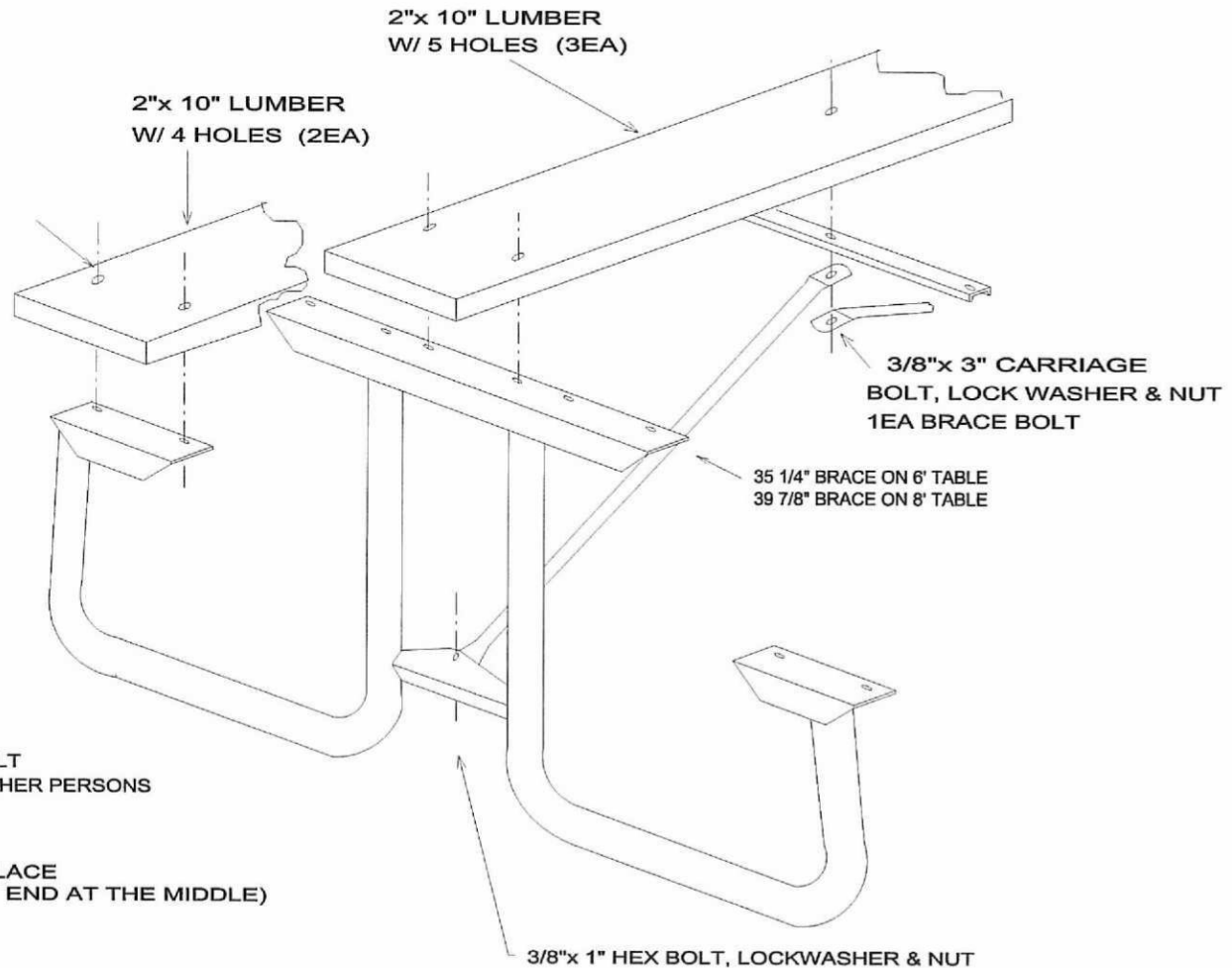


ASSEMBLY INSTRUCTIONS FOR 6 or 8J2GW

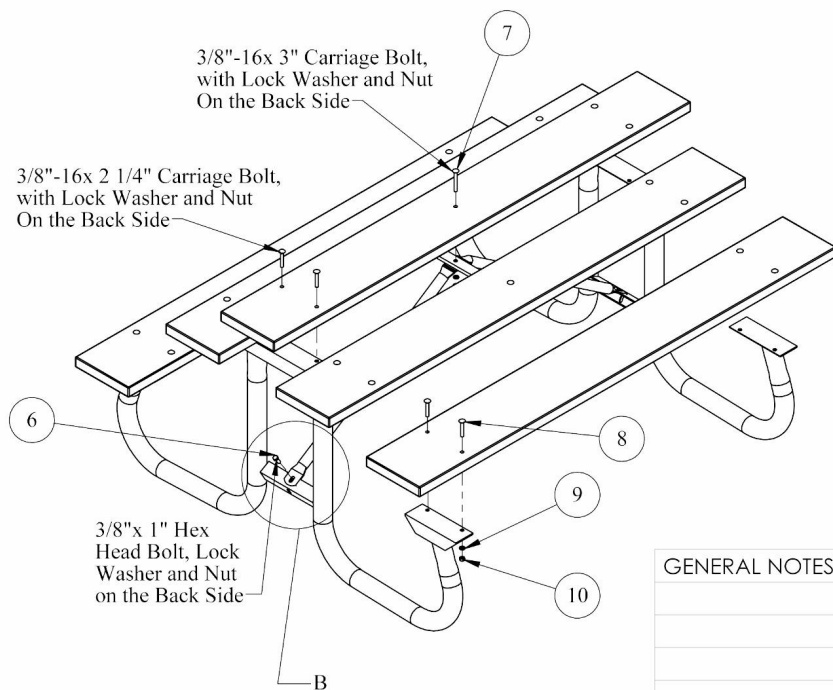
3/8"x 2 1/4" CARRIAGE
BOLT, LOCKWASHER & NUT
22EA (EXCEPT BRACE)

DO NOT TIGHTEN BOLT UNTIL THE LAST STEP

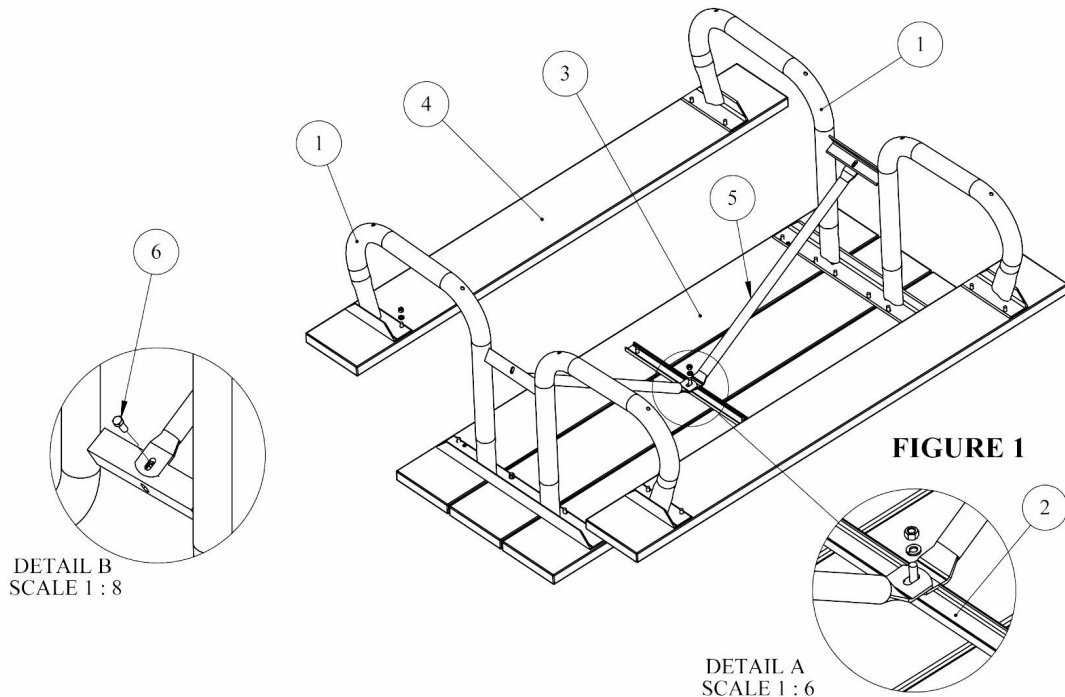
1. PUT THE 2 1/4" CARRIAGE BOLTS IN THE BOARDS W/5 HOLES (NOTE THE 3" CARR. BOLT IN THE MIDDLE BOARD) PLACE THEM WITH THE HEAD ON THE ROUTERED SIDE OF THE LUMBER. LAY THE BOARDS DOWN, SIDE BY SIDE, APPROX. 3/8" APART, W/ THE THREADS OF THE BOLT SHOWING.
2. SET ONE OF THE FRAMES UPSIDE DOWN MATCHING THE HOLES TO THE BOLTS. PLACE LOCKWASHERS & NUTS ON THE BOLTS (DO NOT FULLY TIGHTEN YET) REPEAT THIS FOR THE OTHER END OF THE TABLE, BE SURE THE FRAME ANGLES FACE INWARD TOWARDS EACH OTHER.
3. HOLD A 4 HOLE PLANK UP TO THE SEATS BRACKETS WITH THE GOOD SIDE DOWN. INSERT A 2 1/4" CARR. BOLT LOCKWASHER & NUT IN EACH HOLE. YOU MAY NEED ANOTHER PERSONS HELP WITH THIS STEP. REPEAT FOR THE OTHER SIDE.
4. NOW PLACE THE CENTER CHANNEL ON THE THREE BOLTS AT THE CENTER OF THE BOARDS. THEN PLACE THE BRACES AS SHOWN IN THE DRAWING (BENT END AT THE MIDDLE)
5. TIGHTEN ALL BOLTS NOW.



1. Put the 2 1/4" Carriage Bolts in the Boards with the (5) Holes. There will be (3) Boards, These are used for the Table Top.(Note the 3" Long Carriage Bolt is used for the Middle Hole in the Middle Board.) Place the Head of the Bolts on the Routed Side of the Boards.
2. Match the Top Board Holes with the Holes on the Table Top Angle Iron Cleat, Place a Lock Washer and Nut on the Bolts. Finger Tighten at This Time. Note the Orientation of the Table Leg Frames in **FIGURE 1.**
3. Place the Seat Planks on with the Routed Sides Facing Towards the Ground or The Side You Would Sit On. Finger Tighten the Bolts and Nuts at This Time.
4. Place the Center C Channel On the Center Holes of the Table Top. Use the 3" Carriage Bolt for the Center Hole Only.
5. Fasten the Support Braces to the Table Frame and Center Top Cleat as Shown, Finger Tighten Bolts, and Nuts. Now You Should be Able to Square up and Tighten all Hardware on the Table.



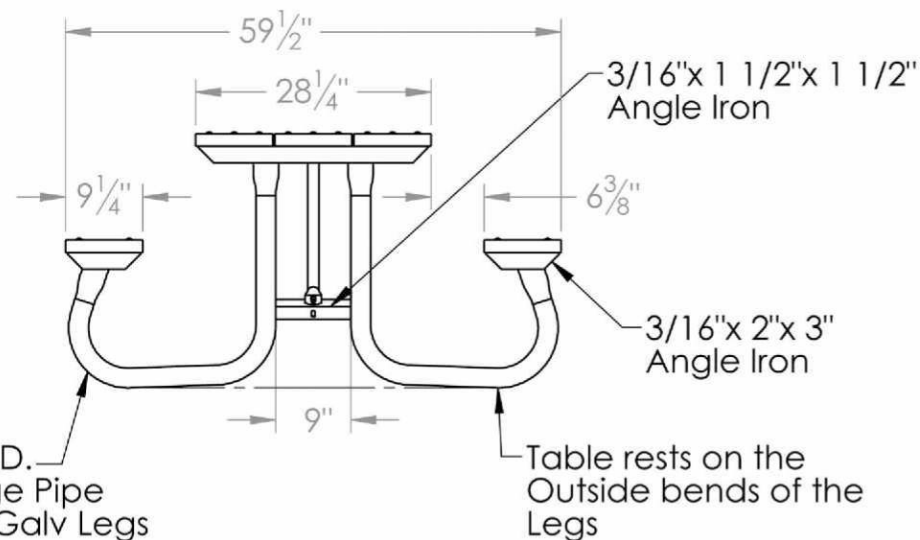
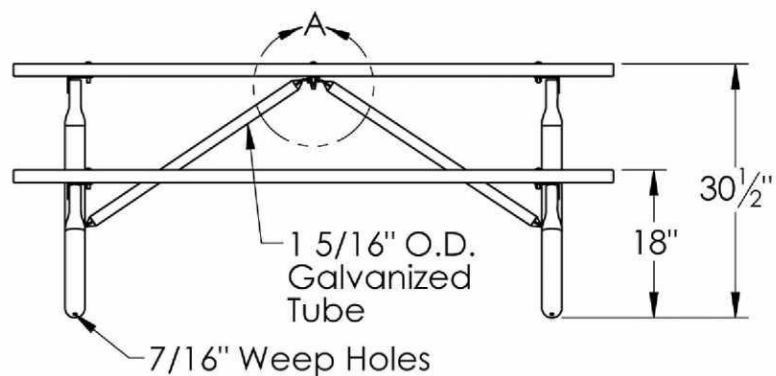
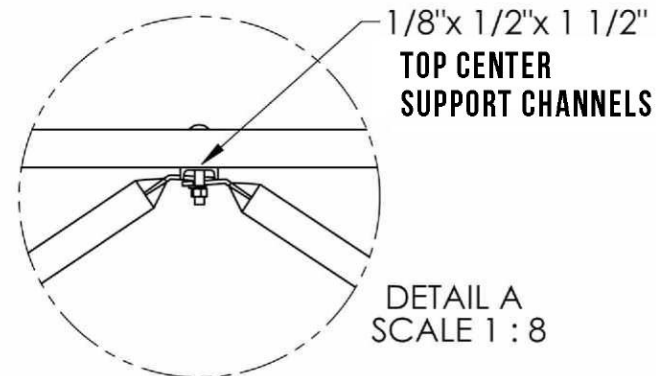
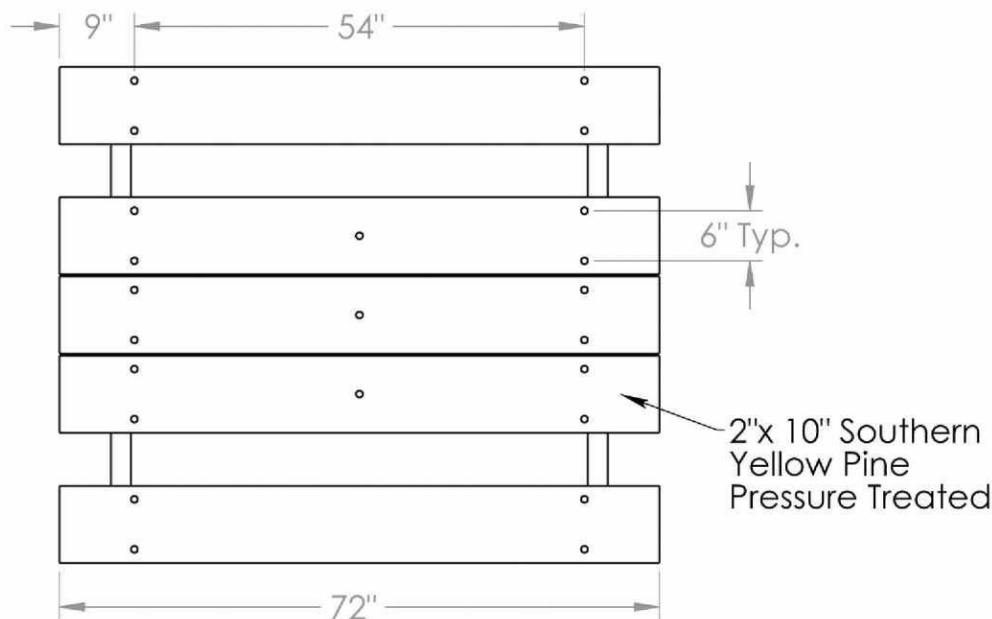
ITEM NO.	PART NUMBER	DESCRIPTION	Table Assembly/QTY.
1	J2-SA1	J2 LEG SUB ASSEMBLY	2
2	IPTC-6	1/2"x 1 1/2" CHANNEL COATED CENTER CLEAT	1
3	6IPT5-7	2x10 6' 4 HOLE CCA WOOD (54")	3
4	6IW4-7	2x10 6' 4 HOLE CCA WOOD (54")	2
5	6IPT-5	6IPT-5 Galvanized	2
6	HBOLT 0.3750-16x1x1-N	3/8"-16x 1" Hex Head Bolt	2
7	RHSNBOLT 0.375- 16x3x1-N	3/8"-16x 3" CARRIAGE BOLT	1
8	RHSNBOLT 0.375- 16x2.25x1-N	3/8"x 2 1/4" CARRIAGE BOLT	22
9	LOCKW-3/8	LOCK WASHER 3/8"	25
10	HNUT 0.3750-16-D-N	3/8"-16 HEX NUT	25



GENERAL NOTES:

<div>DIMENSIONS ARE IN INCHES TOLERANCES: FRACTIONAL ± 1/32 BEND ± 1/2" THREE PLACE DECIMAL ± .005 Do Not Scale Drawing</div>	DRAWN	DAT	9/22/2014	TITLE:		
	CHECKED			DESC.		
	ENG APPR.			6 Ft. TABLE w/ TREATED TOP and SEATS		
	MFG APPR.					
	MATERIAL	Last Saved	9/22/2014 11:54:04 AM		S:\CADDRWGS\Solidworks\Tables\J2\	
	COMMENTS:			SIZE	PART NO.	REV
				B	6J2GW	
SHEET 1 OF 1						
Path to Part or Assy - 6J2GW		S:\CADDRWGS\Solidworks\Tables\J2\		Table Assembly		

CONFIDENTIAL DRAWING AND INFORMATION IS NOT TO BE
COPIED OR DISCLOSED TO OTHERS WITHOUT THE CONSENT
OF KAY PARK. SPECIFICATIONS ARE SUBJECT TO CHANGE
WITHOUT NOTICE.



Confidential Drawing and Information
is not to be Copied or Disclosed to Others
without the Consent of Kay Industries.
Specifications are Subject to Change
without Notice

FURNITURE LEISURE INC

OUR LIST OF WEB STORES

www.FurnitureLeisure.com
www.PicnicFurniture.com
www.ParkTables.com

www.PoolFurnitureSupply.com
www.PicnicTableSupplier.com
www.UBrace.com

1.800.213.2401

UNLESS OTHERWISE SPECIFIED:

DIMENSIONS ARE IN INCHES
TOLERANCES:
FRACTIONAL $\pm 1/32$
BEND $\pm 1/2^\circ$
THREE PLACE DECIMAL $\pm .005$

DO NOT SCALE DRAWING

MATERIAL

Sheet 1 of 1

NAME

DATE

DRAWN

DAT

9/22/2014

CHECKED

ENG APPR.

MFG APPR.

LAST SAVED

9/22/2014 1:01:12 PM

COMMENTS:

WGT. 208 Lbs.

TITLE:

DESC.

6' TABLE 2"x6" TREATED TOP and SEATS

S:\CADDRWGS\Solidworks\Tables\J2\

SIZE

A

PART NO.

6J2GW (Spec)

REV